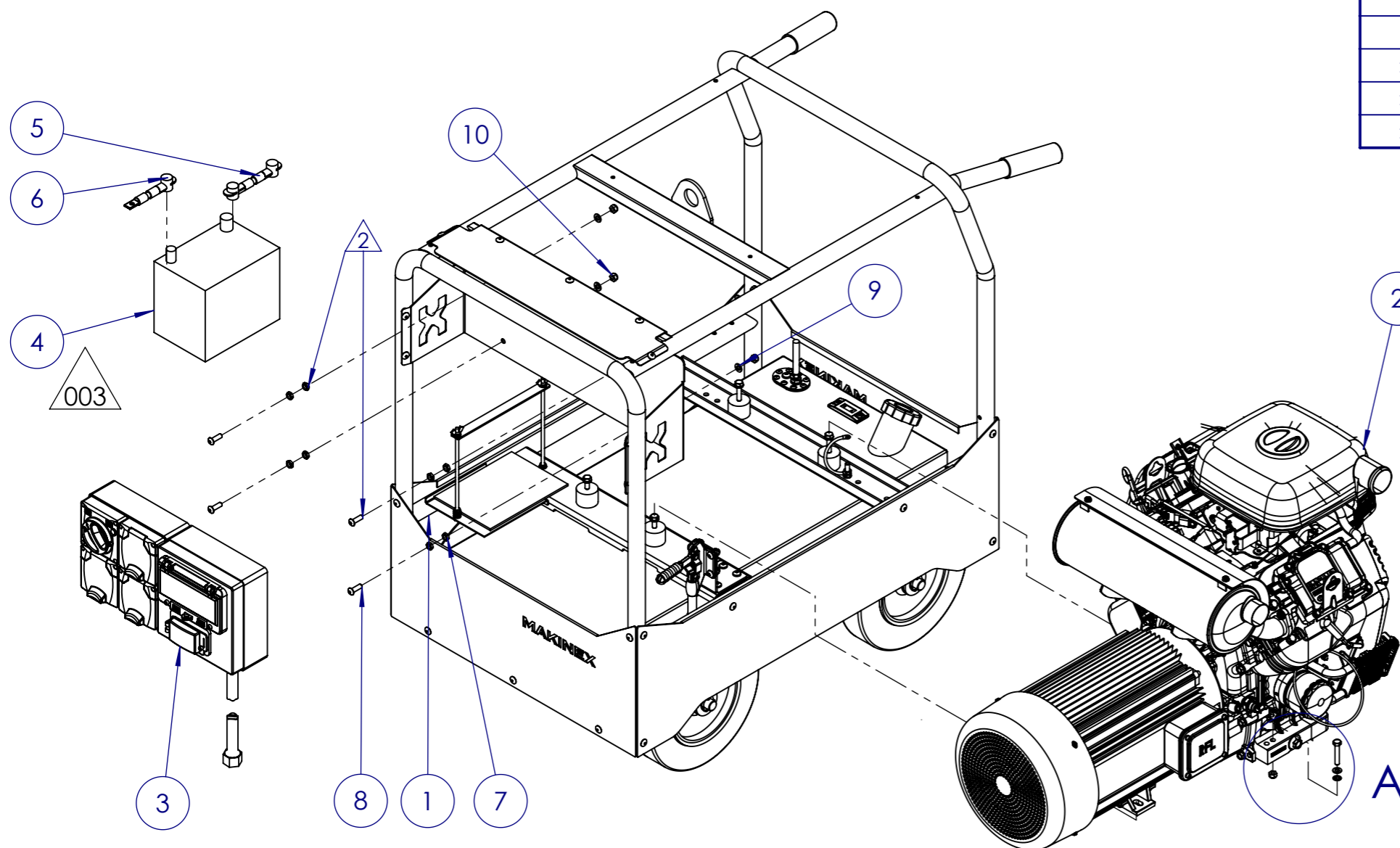
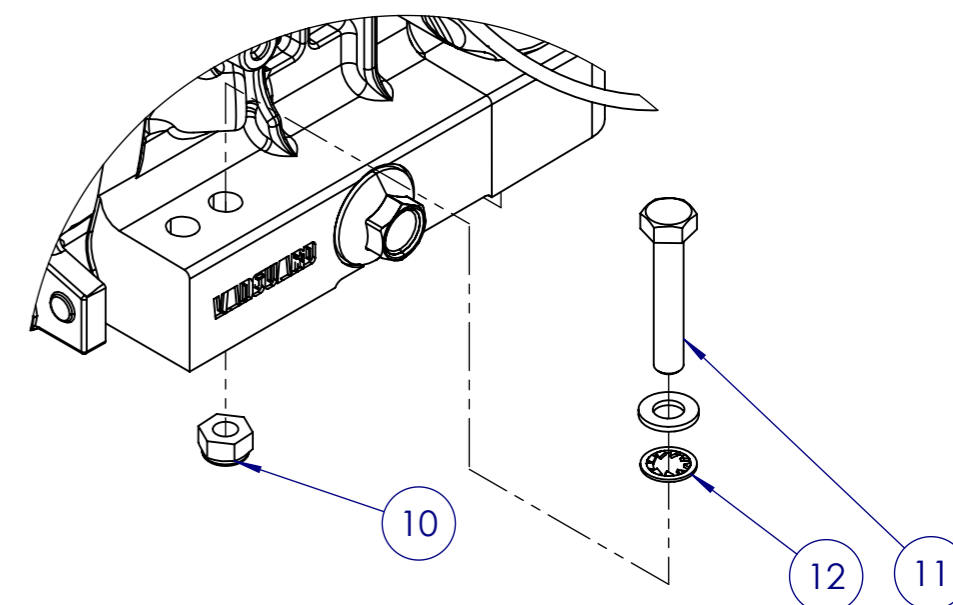


PRINT MAY BE REDUCED - DO NOT SCALE.

ITEM NO.	PART NO.	PART NAME	QTY	SPARE PART?
1	GEN-23P-01-00	FRAME ASSEMBLY	1	N
2	GEN-23P-02-00	ENGINE+ALTERNATOR ASSEMBLY	1	SEE PAGE 3
3	GEN-23P-05-00	ELECTRICAL PANEL, 23 kVA, 415, 240 , 32 A	1	Y
4	SSU1R BATTERY 12V380CCA	SSU1R BATTERY	1	Y
5	MAK-UP-201	M8 360 MM 2 B&S RED BATTERY CABLE ASSEMBLY	1	N
6	MAK-UP-200	M8 300 MM 2 B&S BLACK BATTERY CABLE ASSEMBLY	1	N
7	MAK-UP-517	M8 HEX NUT	8	N
8	MAK-UP-716	M8X25 BUTTON HEAD SOCKET SCREW	4	N
9	MAK-UP-535	M8 FLAT WASHER (MEDIUM)	5	N
10	MAK-UP-511	M8 NYLOC NUT	5	N
11	MAK-UP-738	M8X45 HEX BOLT Z/P	1	N
12	MAK-UP-689	M8 INTERNAL TOOTH STAR WASHER	1	N



EARTHING POINT FASTENERS



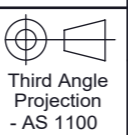
DETAIL A
SCALE 1 : 2



Sydney (Head Office) Ph: 1300 795 953
15 Waltham St
Artarmon, 2064
NSW, Australia
www.makinex.com.au
sales@makinex.com.au

COPYRIGHT 2024 MAKINEX.
WARNING: Copyright in this drawing remains the property of Kennards Innovation and Sustainability and copying in whole or part is not permitted without the written authority of the copyright owner.

GENERAL TOLERANCES
(Unless otherwise noted)
0-100mm: ± 0.25 mm
100mm - 500mm: ± 0.5 mm
500mm +: ± 1.0 mm
Angular: ± 1 deg.



DATE: 20/11/2024
SCALE: 1:20 A3
All Dimensions are in Millimetres
Break All Sharp Corners and
Remove Burrs & Swarf
25.00
Denotes Critical Dimension

PROJECT: 23kVA Petrol Generator

DWG NO.	TITLE	MATERIAL	THICKNESS	FINISH
GEN-23P-AU-V2	COMPLETE ASSEMBLY	SEE PARTS	SEE PARTS	SEE PARTS

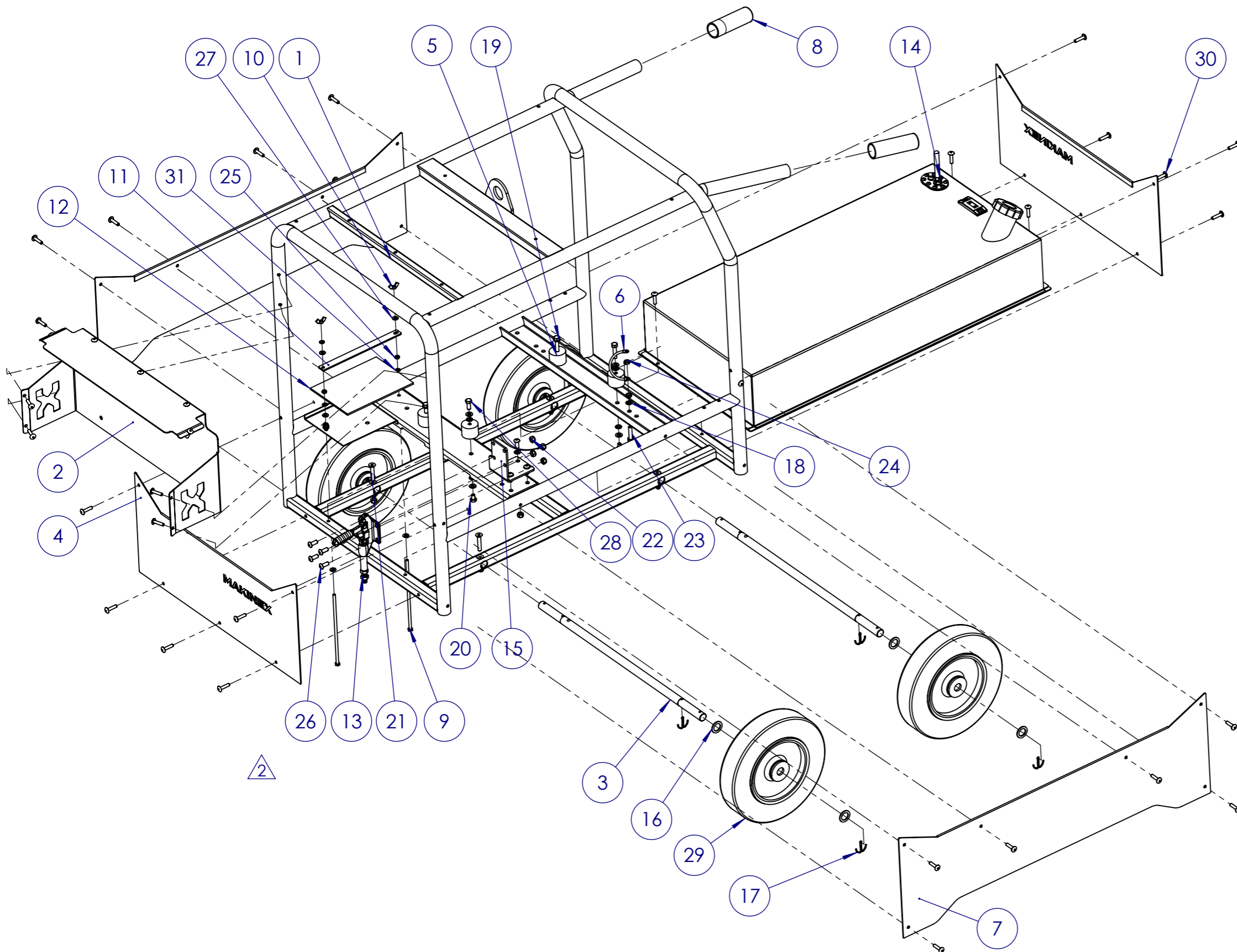
NOTES:

DRN: AL/WW REV: 004

SHEET 1 OF 6

PRINTED: 20/11/2024

PRINT MAY BE REDUCED - DO NOT SCALE.



ITEM NO.	PART NO.	PART NAME	QTY	SPARE PART
1	GEN-23P-01-W	FRAME WELDMENT	1	N
2	GEN-23P-01-20	SWITCHBOX BRACKET	1	Y
3	GEN-23P-01-19	WHEEL AXLE	2	Y
4	GEN-23P-01-23	COVER PANEL	2	Y
5	MAK-UP-25	ENGINE MOUNT (40MM x 30MM 50 SHORE A)	4	Y
6	MAK-UP-107	EARTH CABLE 4 MM X 200 MM	1	N
7	GEN-23P-01-22	SIDE PANEL	2	Y
8	MAK-UP-205	BLACK MATTE HONEYCOMB GRIP 29.97 x 115.57 MM	2	Y
9	GEN-23P-01-28	M6X200 THREADED CUSTOM BOLT	2	N
10	MAK-UP-508	M6 WING NUT	2	N
11	GEN-23P-01-24	BATTERY BAR	1	N
12	GEN-23P-05-03	BATTERY PADDING (200X145X4MM)	1	N
13	MAK-UP-132	TOGGLE CLAMP	1	Y
14	GEN-23P-03-00	50L FUEL TANK ASSEMBLY	1	Y
15	GEN-23P-01-27	BRAKE BRACKET	1	N
16	MAK-UP-06	20MM NYLON WASHER	8	Y
17	MAK-UP-566	3MM SPLIT PIN	8	N
18	MAK-UP-516	M8 SPRING WASHER	14	N
19	MAK-UP-535	M8 FLAT WASHER (MEDIUM)	13	N
20	MAK-UP-519	M8X12 HEX BOLT	4	N
21	MAK-UP-724	M8X45 CSK BOLT ZP	4	N
22	MAK-UP-511	M8 NYLOC NUT	12	N
23	MAK-UP-518	M8X35 HEX BOLT Z/P	3	N
24	MAK-UP-517	M8 HEX NUT	2	N
25	MAK-UP-507	M6 HEX NUT	3	N
26	MAK-UP-512	M8X20 BUTTON HEAD SOCKET SCREW	8	N
27	MAK-UP-551	M6 FLAT WASHER (SMALL)	8	N
28	MAK-UP-520	M8X20 HEX BOLT	2	N
29	MAK-UP-254	280mm x 70mm Black Rubber Wheel	4	Y
30	MAK-UP-726	6.5 X 12 MM ALUMINIUM RIVET	36	N
31	MAK-UP-506	M6 SPRING WASHER	5	N



Sydney (Head Office) Ph: 1300 795 953
 15 Waltham St
 Artarmon, 2064
 NSW, Australia
www.makinex.com.au
sales@makinex.com.au

COPYRIGHT 2024 MAKINEX.
 WARNING: Copyright in this drawing remains the property of Kennards Innovation and Sustainability and copying in whole or part is not permitted without the written authority of the copyright owner.

GENERAL TOLERANCES
 (Unless otherwise noted)
 0-100mm: ± 0.25 mm
 100mm - 500mm: ± 0.5 mm
 500mm +: ± 1.0 mm
 Angular: ± 1 deg.



DATE: 20/11/2024

PROJECT: 23kVA Petrol Generator

SCALE: 1:10 A3

DWG NO.

TITLE

MATERIAL

REV: 004

FINISH

GEN-23P-AU-V2

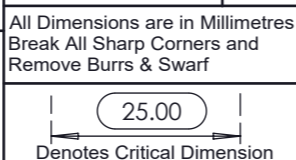
FRAME ASSEMBLY

SEE PARTS

DRN:AL/WW

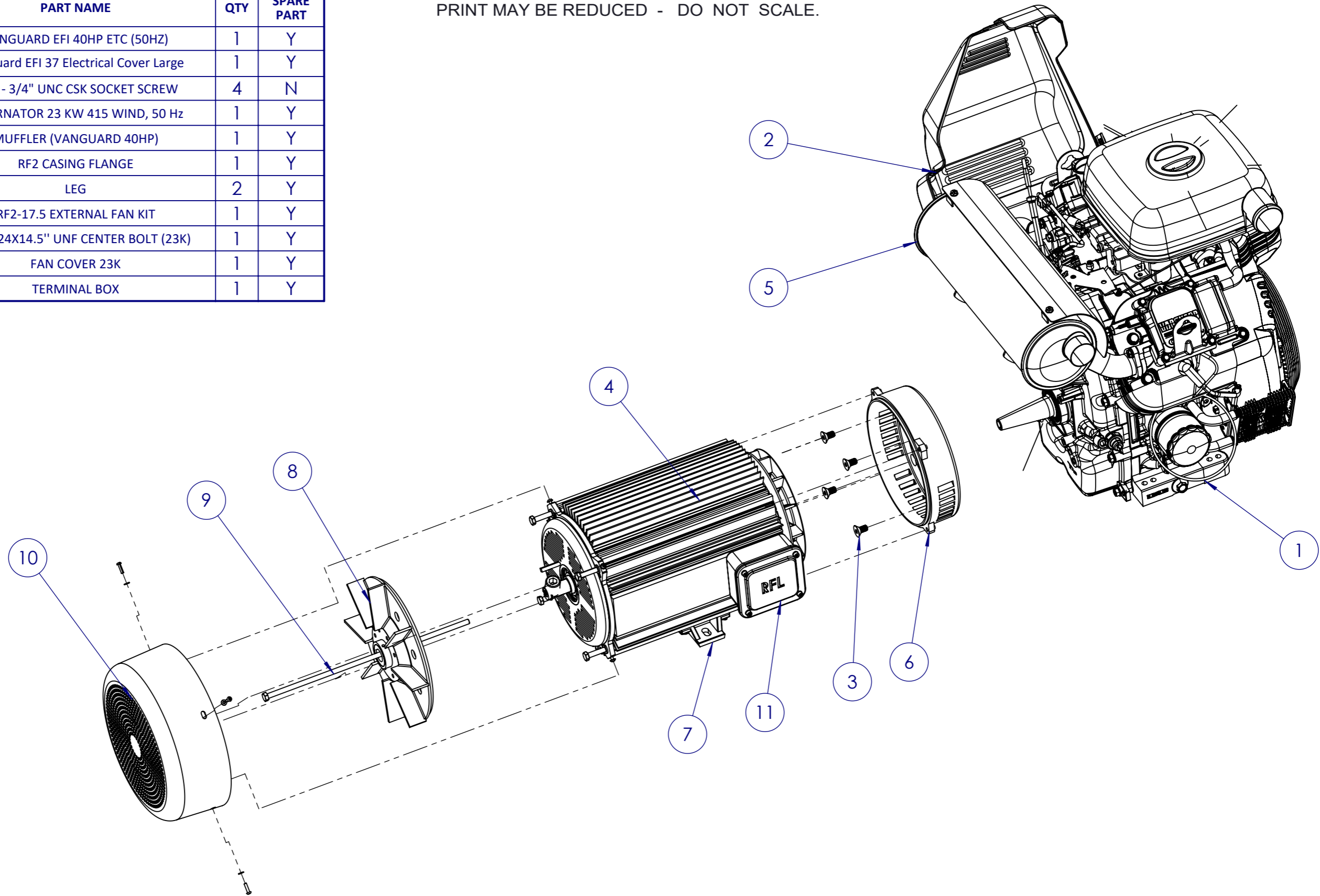
SEE PARTS

NOTES:



ITEM NO.	PART NO.	PART NAME	QTY	SPARE PART
1	61G2770015J1	VANGUARD EFI 40HP ETC (50HZ)	1	Y
2	848079	Vanguard EFI 37 Electrical Cover Large	1	Y
3	MAK-UP-525	3/8" - 3/4" UNC CSK SOCKET SCREW	4	N
4	RF2-27.5-2	ALTERNATOR 23 KW 415 WIND, 50 Hz	1	Y
5	HA200600	MUFFLER (VANGUARD 40HP)	1	Y
6	RF0256	RF2 CASING FLANGE	1	Y
7	RF0014	LEG	2	Y
8	RF0285	RF2-17.5 EXTERNAL FAN KIT	1	Y
9	MAK-UP-736	5/16"-24X14.5" UNF CENTER BOLT (23K)	1	Y
10	RF0217	FAN COVER 23K	1	Y
11	RF0012	TERMINAL BOX	1	Y

PRINT MAY BE REDUCED - DO NOT SCALE.



Sydney (Head Office) Ph: 1300 795 953
 15 Waltham St
 Artarmon, 2064
 NSW, Australia
 www.makinex.com.au
 sales@makinex.com.au

COPYRIGHT 2024 MAKINEX.
 WARNING: Copyright in this drawing remains the property of Kennards Innovation and Sustainability and copying in whole or part is not permitted without the written authority of the copyright owner.

GENERAL TOLERANCES
 (Unless otherwise noted)
 0-100mm: ± 0.25 mm
 100mm - 500mm: ± 0.5 mm
 500mm +: ± 1.0 mm
 Angular: ± 1 deg.



DATE: 20/11/2024

PROJECT: 23kVA Petrol Generator

SCALE: 1:6.5 A3

DWG NO.

TITLE

MATERIAL

REV: 004

FINISH

GEN-23P-AU-V2

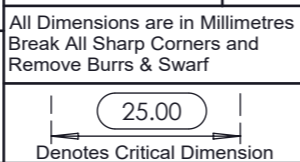
ENGINE + ALTERNATOR ASSEMBLY

SEE PARTS

DRN: AL/WW

SEE PARTS

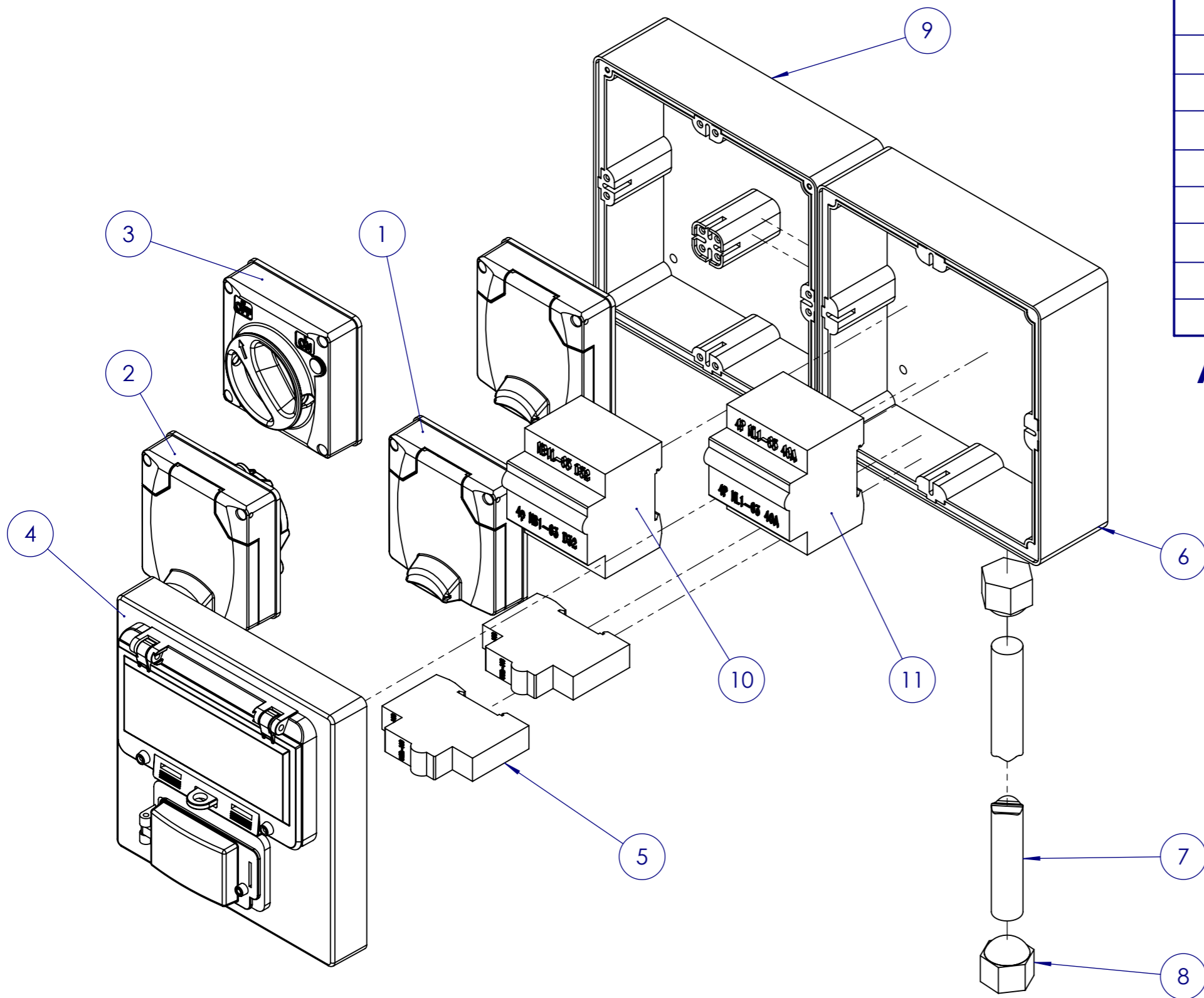
NOTES:



SHEET 3 OF 6

PRINTED: 20/11/2024

PRINT MAY BE REDUCED - DO NOT SCALE.



ITEM NO.	PART NO.	PART NAME	QTY	SPARE PART
1	MAK-UP-77	SINGLE PHASE OUTLET 15A	2	Y
2	GENS-04-08	415V 3-PHASE 5-PIN 32 A OUTLET	1	Y
3	GENS-04-09	ISOLATOR SWITCH	1	Y
4	MAK-UP-212	ENCLOSURE COVER (DOUBLE WINDOW)	1	Y
5	MAK-UP-89	16A RCBO SINGLE PHASE 1 POLE	2	Y
6	MAK-UP-212-23	MOUNTING BOX 8MOD 23KVA (400MMX200MM) - RHS	1	Y
7	MAK-UP-231	25MM CONDUIT	2	N
8	MAK-UP-232	STRAIGHT GLAND 30MM	2	N
9	MAK-UP-212-23	MOUNTING BOX 8MOD 23KVA (400MM X 200MM)	1	Y
10	MAK-UP-309	HAGER RCCB 3P+N 40A 30mA,B	1	Y
11	MAK-UP-216	RCD 4P 40A A TYPE 6KA	1	Y

ALL BREAKERS ARE TO BE B-CURVE



Sydney (Head Office) Ph: 1300 795 953
 15 Waltham St
 Artarmon, 2064
 NSW, Australia
 www.makinex.com.au
 sales@makinex.com.au

COPYRIGHT 2024 MAKINEX.
 WARNING: Copyright in this drawing remains the property of Kennards Innovation and Sustainability and copying in whole or part is not permitted without the written authority of the copyright owner.

GENERAL TOLERANCES
 (Unless otherwise noted)
 0-100mm: ± 0.25 mm
 100mm - 500mm: ± 0.5 mm
 500mm +: ± 1.0 mm
 Angular: ± 1 deg.

Third Angle
 Projection
 - AS 1100

DATE: 20/11/2024

SCALE: 1:3 A3

All Dimensions are in Millimetres
 Break All Sharp Corners and
 Remove Burrs & Swarf

25.00
 Denotes Critical Dimension

PROJECT: 23kVA Petrol Generator

DWG NO.

GEN-23P-AU-V2

NOTES:

TITLE

ELECTRICAL PANEL, 23kVA, 415V, 240V, 32A

MATERIAL

SEE PARTS

REV: 004

DRN: AL/WW

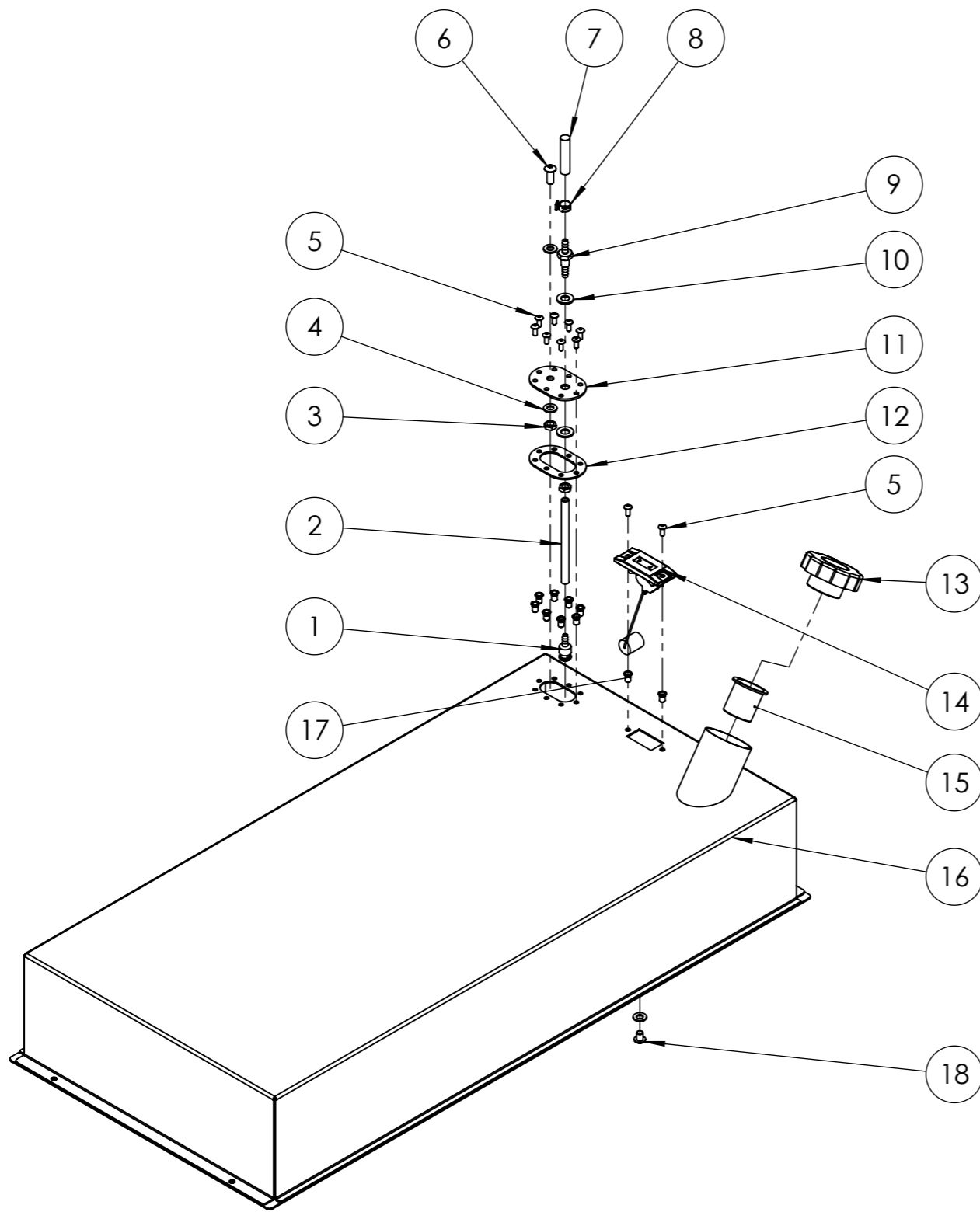
FINISH

SEE PARTS

SHEET 4 OF 6

PRINTED: 20/11/2024

PRINT MAY BE REDUCED - DO NOT SCALE.



ITEM NO.	PART NO.	PART NAME	QTY.	SPARE PART
1	MAK-UP-277	FUEL PICKUP WEIGHT	1	Y
2	GEN-23P-03-15	FUEL PICKUP LINE	1	N
3	MAK-UP-517	M8 HEX NUT	2	N
4	MAK-UP-535	M8 FLAT WASHER (MEDIUM)	3	N
5	MAK-UP-609	M5X12 BUTTON HEAD SOCKET SCREW	10	N
6	MAK-UP-512	M8X20 BUTTON HEAD SOCKET SCREW	1	N
7	GEN-23P-03-06	1_4 INCH HOSE	1	N
8	GEN-23P-03-12	1/4" HOSE CLAMP	1	N
9	GEN-23P-03-13	3/8" THREAD TO 1/4" HOSE BARB	1	N
10	MAK-UP-278	BARB SEAL RING	2	Y
11	GEN-23P-03-07	FUEL COVER	1	Y
12	GEN-16P-05-10	FUEL LINE MOUNTING PLATE GASKET	1	Y
13	MAK-UP-281	FUEL CAP FOR 16K,23K AND 32K	1	Y
14	GEN-23P-03-09	FUEL GAUGE	1	Y
15	MAK-UP-280	FUEL STRAINER	1	Y
16	GEN-23P-03-00	50L FUEL TANK ASSEMBLY,RED	1	Y
17	MAK-UP-710	M5 NUTSERT	10	N
18	MAK-UP-709	M8X10 BUTTON HEAD SOCKET SCREW	1	N



Sydney (Head Office) Ph: 1300 795 953
 15 Waltham St
 Artarmon, 2064
 NSW, Australia
www.makinex.com.au
sales@makinex.com.au

COPYRIGHT 2024 MAKINEX.
 WARNING: Copyright in this drawing remains the property of Kennards Innovation and Sustainability and copying in whole or part is not permitted without the written authority of the copyright owner.

GENERAL TOLERANCES
 (Unless otherwise noted)
 0-100mm: ± 0.25 mm
 100mm - 500mm: ± 0.5 mm
 500mm +: ± 1.0 mm
 Angular: ± 1 deg.



DATE: 20/11/2024

SCALE: 1:7 A3

All Dimensions are in Millimetres
 Break All Sharp Corners and
 Remove Burrs & Swarf



PROJECT: 23kVA Petrol Generator

DWG NO. GEN-23P-AU-V2

TITLE 50L FUEL TANK ASSEMBLY

NOTES:

MATERIAL SEE PARTS

REV: 004

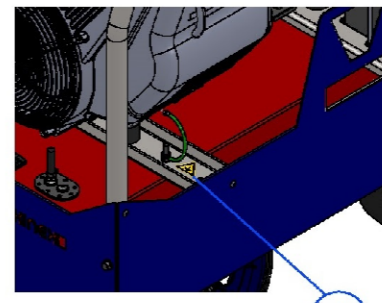
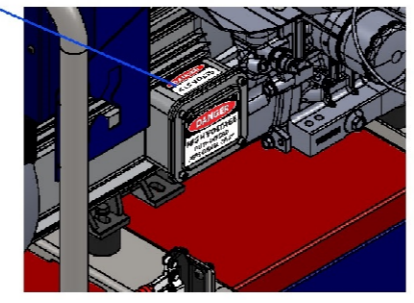
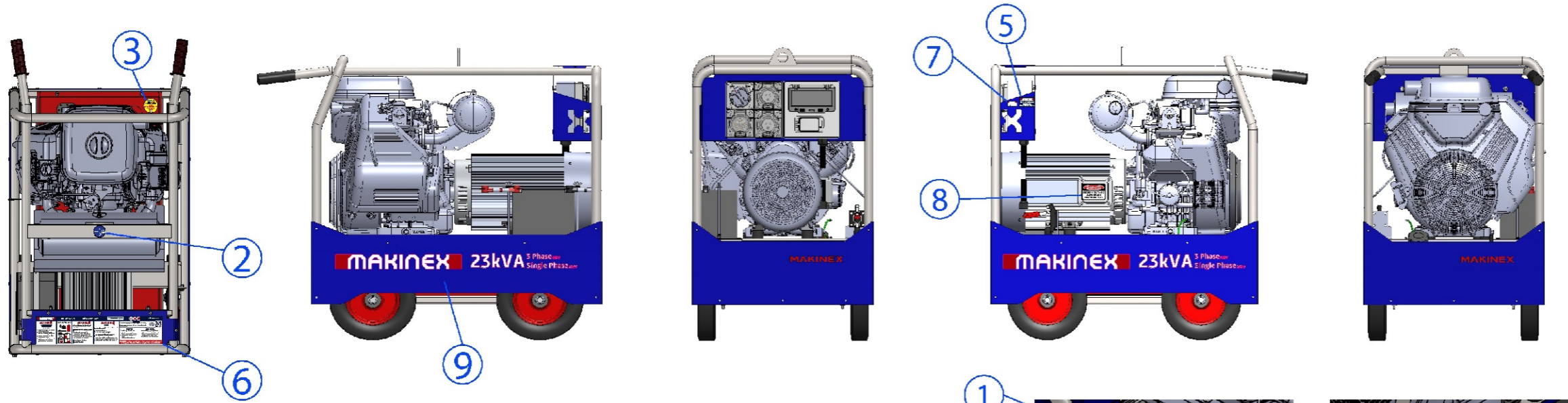
FINISH SEE PARTS

DRN: AL/WW

SHEET 5 OF 6

PRINTED: 20/11/2024

DECALS NOT TO SCALE



6

MAKINEX GEN-23P-AU-415 23kVA 415V 240V

ENGINE 993cc Vanguard E1 Petrol FUEL TANK 50 L / 13 Gal

DANGER CARBON MONOXIDE POISONOUS GAS See Manual

USE OUTDOORS AVOID CARBON MONOXIDE POISONING

DANGER SHOCK

OPERATION Read Operator's Manual carefully before operating unit. Always make sure unit is level and properly grounded. Check engine oil before starting. See instructions located in operator's manual for starting procedure.

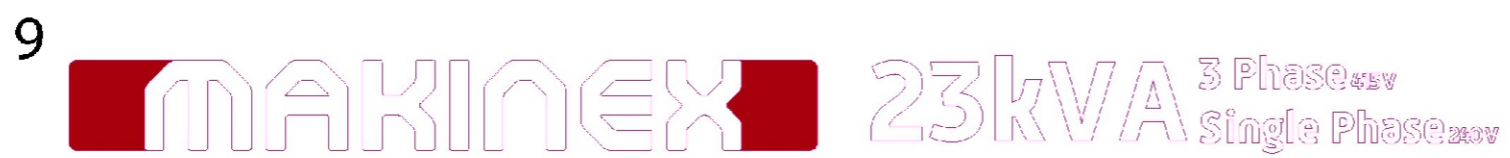
START-UP

- Turn the engine key to the START position, hold until engine starts.
- When the engine starts, release key, allowing it to return to the ON position.
- Allow unit to run two (2) minutes to warm up. Loads can now be applied to unit.

SHUT-DOWN

- Remove all load by turning off electrical appliances and unplugging electric cords.
- Allow engine to run with no load to cool for two (2) minutes. Not allowing engine to cool may result in damage to unit.
- Turn the engine key to the OFF position.

IMPORTANT: For maximum battery life, please recharge the battery every 3 months or when the battery voltage is less than 12.6V. Isolate battery if not in use for extended periods.



VINYL CUT ALONG PINK LINE

DECALS ARE SOLD AS A SET ONLY.

DECAL SET PART NUMBER IS:
GEN-23P-06-00.

<p>Sydney (Head Office) Ph: 1300 795 953 15 Waltham St Artarmon, 2064 NSW, Australia</p> <p>www.makinex.com.au sales@makinex.com.au</p>	<p>COPYRIGHT 2024 MAKINEX. WARNING: Copyright in this drawing remains the property of Kennards Innovation and Sustainability and copying in whole or part is not permitted without the written authority of the copyright owner.</p>	<p>DATE: 20/11/2024</p> <p>PROJECT: 23kVA Petrol Generator</p>				
	<p>GENERAL TOLERANCES (Unless otherwise noted)</p> <p>0-100mm: ± 0.25 mm 100mm - 500mm: ± 0.5 mm 500mm +: ± 1.0 mm Angular: ± 1 deg.</p>	<p>SCALE: 1:3 A3</p> <p>All Dimensions are in Millimetres Break All Sharp Corners and Remove Burrs & Swarf</p> <p>Third Angle Projection - AS 1100</p> <p>Denotes Critical Dimension</p>	<p>DWG NO. GEN-23P-AU-V2</p> <p>TITLE ELECTRICAL PANEL, 23kVA, 415V, 240V, 32A</p> <p>NOTES:</p>	<p>MATERIAL SEE PARTS</p>	<p>REV: 004</p> <p>DRN: AL/WW</p>	<p>FINISH SEE PARTS</p>
	<p>SHEET 6 OF 6</p>					