



MAKINEX[®]

Surface Preparation Jackhammer Trolley

A Versatile Demolition Tool That Removes Floor Tiles, Hardwood, and Mortar Beds.



Demolish up to 6x Faster



Significantly Reduces Operator Fatigue and Injury



Suit most 35lbs to 42lbs Jackhammers

Demolish with unmatched speed. Rip through ceramic tiles, thinset, and more up to 6 times faster. The innovative design reduces impact and fatigue, with 80-degree angles across 5 settings. Streamlined and robust, the trolley boasts an easy-to-use spring and brake lever for angle adjustments and an inbuilt dampening system that minimizes impact, vibration, injury risk, and muscle fatigue.



SPECIFICATIONS:

Vacuum Attachment sold separately

Weight (trolley without jackhammer)	60.6lbs/27.5kg
Dimensions (trolley without jackhammer)	L 43.7in/1110mm x H 21.3in/540mm x W 22.4in/570mm
Suitable for 16kg (35lbs) jackhammer models	Bosch 11335K, Hilti TE1000, Hilti TE1500, Makita 1307, 1317, 1520, 1512 and Bauer 1632E-B

Ideal For:



Demolition – Multi Angle Adjustments



Construction



Renovators



Rental



Compatibility with a variety of Jackhammers



Accessories:



1. Tile Smasher Head
with 1 1/8-inch HEX Shank Combo V2
TSHC-SS-US-V2



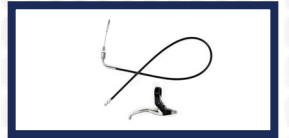
2. Tile Smasher Head
with Hilti HEX Shank Combo V2
TSHC-HS-US-V2



3. Flippable Wide Chisel
WCUS-420



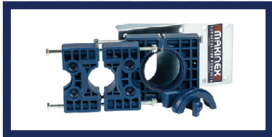
4. Handle Grips
MAK-UP-10-V2



5. Brake Lever and Cable
JHT-99-63-V2



6. Tile Smasher Blade
TSH-B



7. Universal Block Set
JHTB-U-2



8. Tile Smasher Head Bolts
TSH-BS-V2



9. Tile Smasher Attachment Bolts
TSH-BS-V2-KIT



10. Vacuum Attachment
JHT-VA-01-00

Makinex Surface Preparation Range:



1. Mixing Station MS100



2. Mixing Station MS150



3. Floor Stripper