

# DRIVE THE CHANGE



# LITHIUM



## CORMIDI

**CBS**  
MINI TRACK DUMPER





## MAXIMUM EFFICIENCY



Endless hours of testing and fine tuning made the C85 the best in its class for performance and reliability. We created a durable machine with maintenance cost close to none.

## UNDERCARRIAGE



Our undercarriage is like no one. Our Cormidi R&D department put all its experience towards creating the best undercarriage available on the market

## SIMPLY INCREDIBLE



The Cormidi design lab created a machine that mixes industrial design with strength, power and easy to use

# CORMIDI

**C85**  
MINI TRACK DUMPER





# STRENGTHS



The C85 puts incredible power in a compact and sturdy machine



The operators has a perfect access to all the controls and can keep all the parameters under control



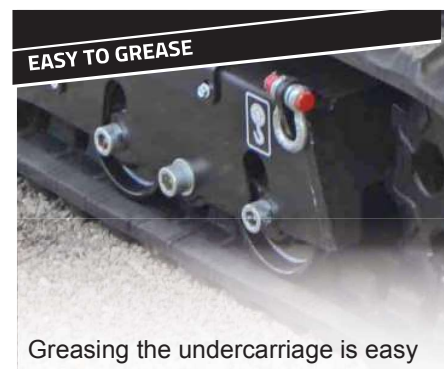
The swinging bucket not only load the dumper but can unload it frontally



The air cooling system allows the machine to operate in extreme conditions



High performance battery pack Life P04, Bms System



Greasing the undercarriage is easy and fast: nothing has to be taken apart.



Electronic control unit battery management software devel. by Cormidi allows for high perfor. and unparalleled battery life. Cormidi also patented an algorithm that allows for both speed and a boost like a hyd. machine as well as softness and precision of movements unique of its kind.



Galvanized sheet, protects the moving parts from materials that could damage them



When the situation needs a shorter unit, the stand can be closed, otherwise it opens to let the operator in.

## CORMIDI

## C85

MINI TRACK DUMPER



# STRENGTHS



The machine can be radio controlled for dangerous jobs.



Large and sturdy hooks to move the machine in total safety.



The machine's undercarriage oscillated to follow the terrain profile for increased stability and comfort.



## CORMIDI COCKPIT

Display 3.5 "touch screen

Display 3.5 "touch screen allows you to view all the settings of the machine as well as choosing the level of power and speed of the machine.

From the display you can select 3 power and speed modes:

- **Std normal speed** long battery life.
- **PF (Performance mode)** Medium high speed and power increase
- **HP (Hyper Performance)** High speed and high traction power.



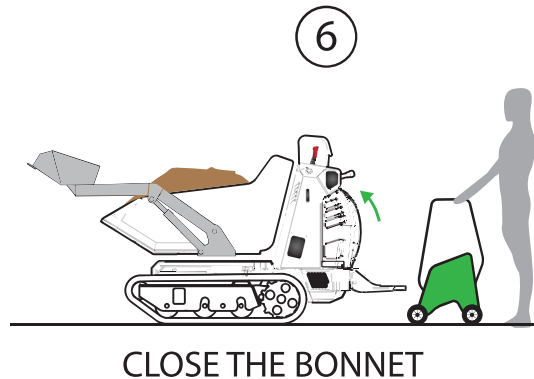
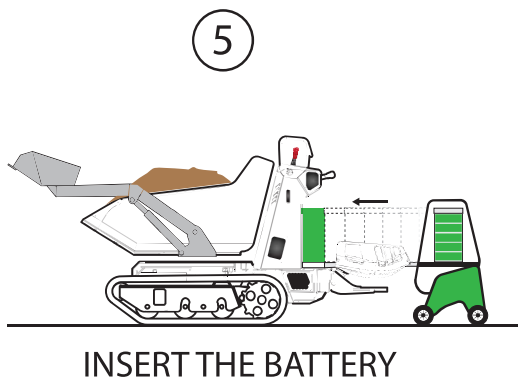
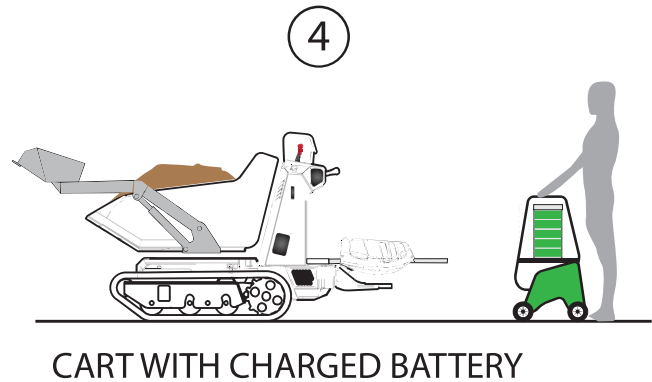
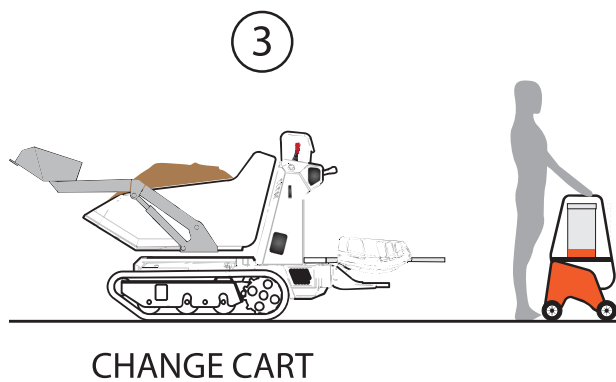
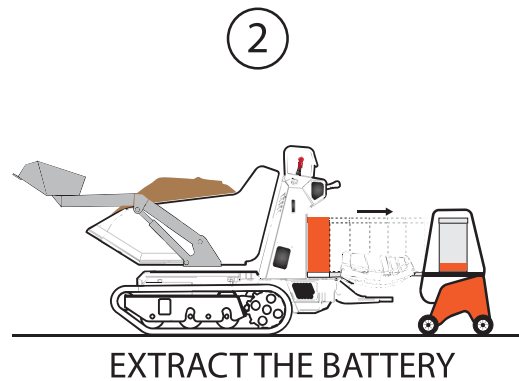
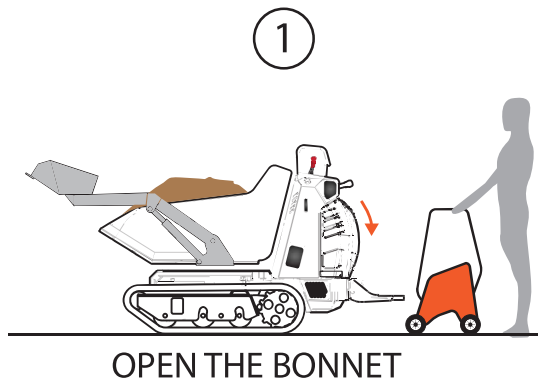
**CORMIDI**

**CBS**  
MINI TRACK DUMPER



DRIVE THE CHANGE

## BATTERY QUICK SHIFT SYSTEM



Another innovation of Cormidi is

a Removable Battery Pack. 

The battery we developed has a very large battery life, but when it does discharge it is possible to

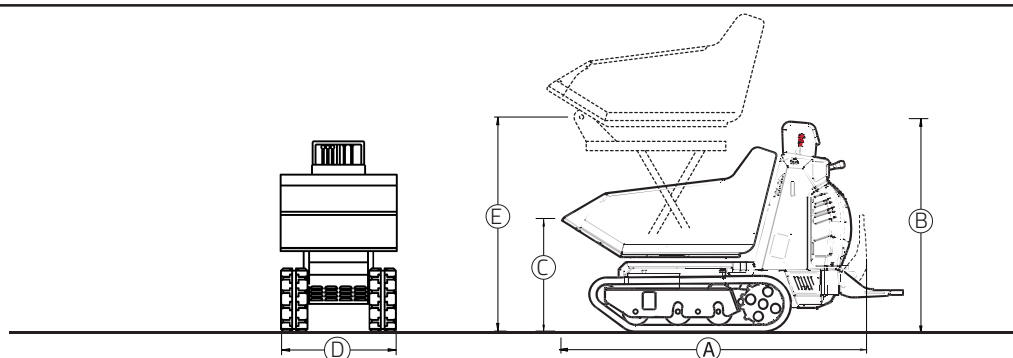
change it in **less than 3 minutes** 

as you would with a normal mobile phone.  
This allows you to work

**24H without stopping.**



# HI-TIP (HI)



	mm		inch.
A	1926	A	75.8
B	1336	B	52.6
C	739	C	29.1
D	810	D	31.9
E	1500	E	59.1

OPERATIVE  
CAPACITY

TOTAL  
WEIGHT

STRUCK

HEAPED SAE



Lithium

**800 kg**

**1764 Lb**

**643 kg**

**1418 Lb**

**0,28 m³**

**0.33 yd³**

**0,36 m³**

**0.45 yd³**

**CORMIDI**

**CBS**  
MINI TRACK DUMPER



# TECHNICAL DATA

METRIC

U.S.

Lithium

ENGINE		
Power 100%	5500w	
Power Peak	6500w	
Voltage	24 VAC	
Current	360 A	
Can Bus Tecnolgy	Yes	

TRANSMISSION		
Type	Hydrostatic	
Hydraulic pump	2 variable piston pump	

TRACKS		
Crawler width	180 mm (7.1 in)	
Rocking rollers	Yes	

HYDRAULIC SYSTEM		
Hydraulic pump	Gear pump	
	1x7 l/min	(1x1.84 gpm)
max pressure	130 bar	(1886 psi)

PERFORMANCE AND DIMENSIONS		
Max. travel speed	(5 Kmh)	(3.1 mph)
Operative weight	800 kg	(1762 LB)
Setting Display touch screen	Yes	
Parking brake	Yes	
Vessel contents	0.28 m <sup>3</sup>	(0.37 yd <sup>3</sup> )
	0.53 m <sup>3</sup>	(0.69 yd <sup>3</sup> )

BATTERY		
Capacity	up to 9,6 kwh	
Volt	24	
Type	LiFeP04	
Duty Cycle Life	3000	
Can Bus Tecnolgy	Yes	

CHARGER BATTERY		
Monofase 220/110V	4,5hr 100%	
Treefase 380V	2,2 hr 100%	

## Attachments

Remote control



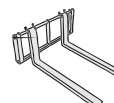
mini excavator



blade



Forks





# DRIVE THE CHANGE

Please note: The machines and accessories depicted in brochures and catalogues can vary from version to version, therefore please consult your distributor for a description of standard accessories and options available for each model. Cormidi reserves the right to change or to modify the specification of the machines without warning. The photos in catalogues and brochures represent the Cormidi machines in production at time of printing. However, newer and upgraded models may look different to the photos shown in this catalogue or brochure.



Via Fonte, 342 Roccadaspide  
(SA) Italy  
ph. +39 0828 943688  
fax +39 0828 943963

## CORMIDI

25 Broad St, Norwalk  
CT 06851, USA  
ph.+1 203-846-6120  
art@cormidiusa.com

