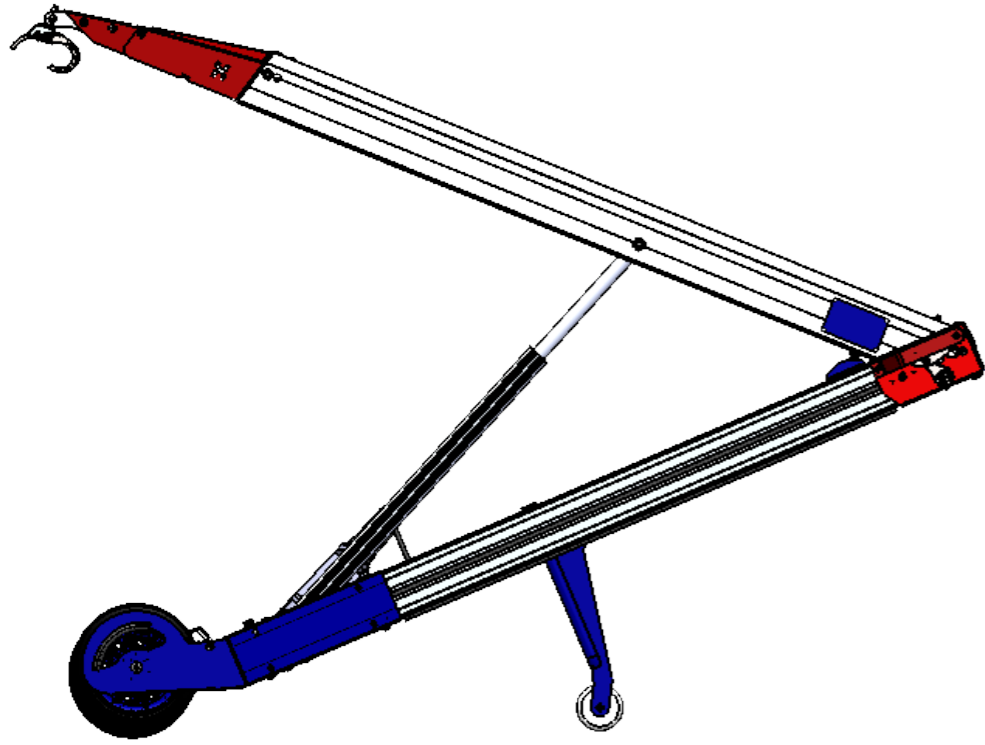
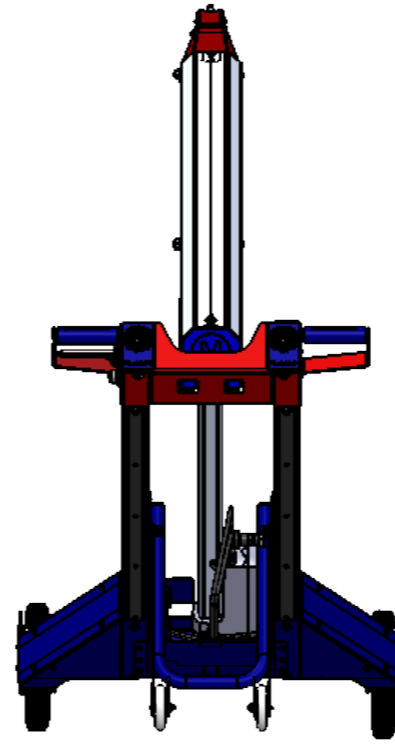


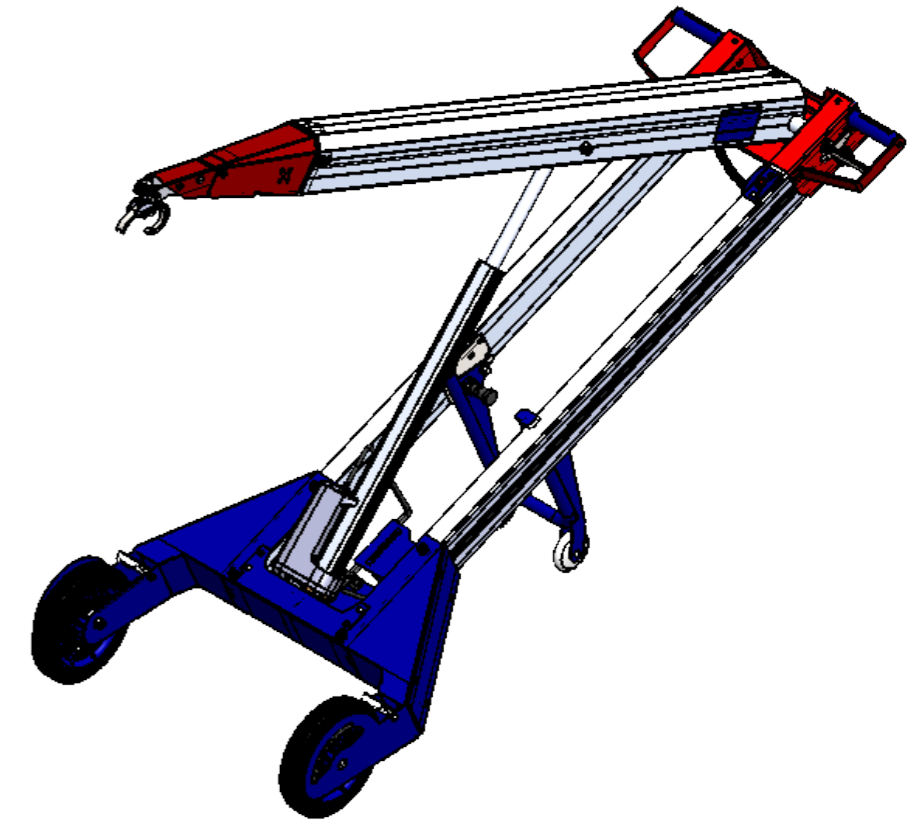
PRINT MAY BE REDUCED - DO NOT SCALE.



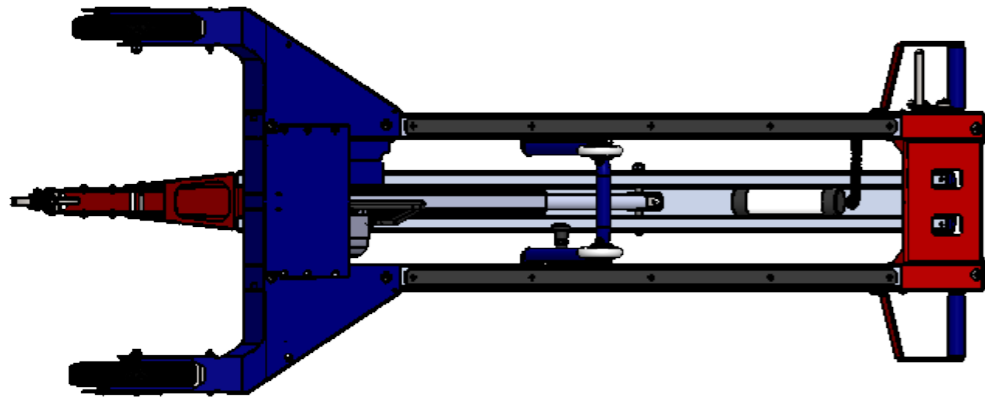
FRONT VIEW



SIDE VIEW



ISOMETRIC VIEW



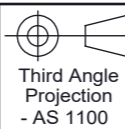
BOTTOM VIEW



Sydney (Head Office) Ph: 1300 795 953
 15 Waltham St Fax: (02) 9439 9815
 Artarmon, 2064 www.makinex.com.au
 NSW, Australia sales@makinex.com.au

COPYRIGHT 2015 MAKINEX.
 WARNING: Copyright in this drawing remains the property of MAKINEX and copying in whole or part is not permitted without the written authority of the copyright owner.

GENERAL TOLERANCES
 (Unless otherwise noted)
 0-100mm: ± 0.25 mm
 100mm - 500mm: ± 0.5 mm
 500mm +: ± 1.0 mm
 Angular: ± 1 deg.



DATE: 09/26/19

SCALE: D.N.S A3

All Dimensions are in Millimetres
 Break All Sharp Corners and
 Remove Burrs & Swarf



PROJECT: PHT2

DWG NO.

PHT2-00

NOTES:

TITLE

COMPLETE ASSEMBLY

MATERIAL

SEE PARTS

FINISH

SEE PARTS

DRN: MWC

MASS

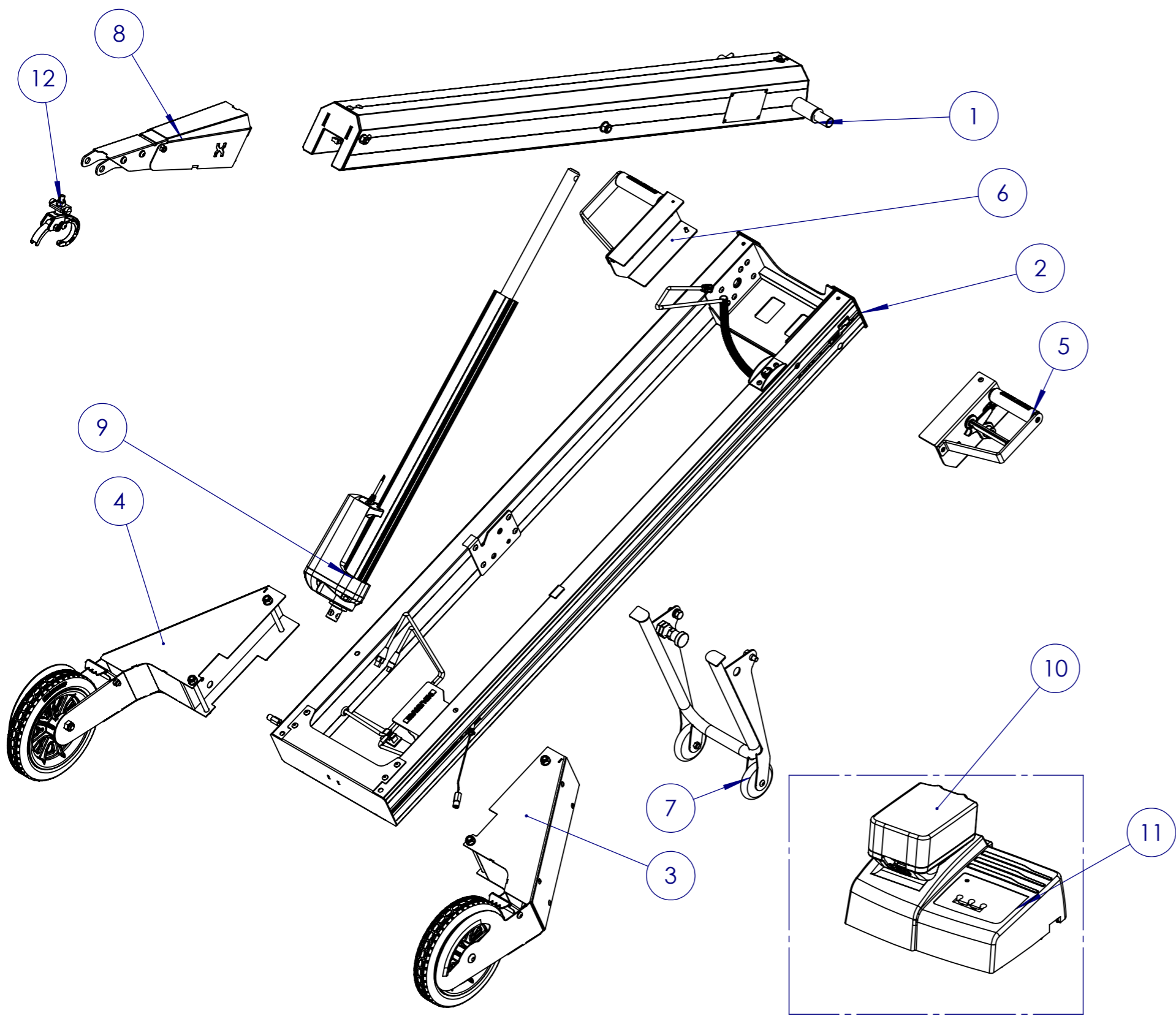
REV

001

SHEET 1 OF 15

PRINTED: 09/26/19

PRINT MAY BE REDUCED - DO NOT SCALE.



EXPLODED VIEW

ITEMNO.	PART NAME	PART NO.	QTY
1	JIB ASSEMBLY	PHT2-01	1
2	FRAME ASSEMBLY	PHT2-02	1
3	LEFT WHEEL ASSEMBLY	PHT2-03L	1
4	RIGHT WHEEL ASSEMBLY	PHT2-03R	1
5	LEFT HANDLE ASSEMBLY	PHT2-04L	1
6	RIGHT HANDLE ASSEMBLY	PHT2-04R	1
7	FOLD WHEEL ASSEMBLY	PHT2-05	1
8	NOSE HOOK ASSEMBLY	PHT2-06	1
9	ACTUATOR	PHT2-07-01	1
10	BATTERY	PHT2-07-03	1
11	CHARGER-AU	PHT2-07-04-AU	1
	CHARGER-US	PHT2-07-04-US	
	CHARGER-EU	PHT2-07-04-EU	
	CHARGER-UK	PHT2-07-04-UK	
12	SELF-CLOSING HOOK	PHT2-08-A	1



Sydney (Head Office) Ph: 1300 795 953
 15 Waltham St Fax: (02) 9439 9815
 Artarmon, 2064 www.makinex.com.au
 NSW, Australia sales@makinex.com.au

COPYRIGHT 2015 MAKINEX.
 WARNING: Copyright in this drawing remains the property of MAKINEX and copying in whole or part is not permitted without the written authority of the copyright owner.

GENERAL TOLERANCES
 (Unless otherwise noted)
 0-100mm: ± 0.25 mm
 100mm - 500mm: ± 0.5 mm
 500mm +: ± 1.0 mm
 Angular: ± 1 deg.

Third Angle Projection
 - AS 1100

DATE: 09/26/19

PROJECT: PHT2

DRN: MWC

SCALE: D.N.S A3

DWG NO.

TITLE

MATERIAL

FINISH

MASS

REV

PHT2-00

COMPLETE ASSEMBLY EXPLODED

SEE PARTS

SEE PARTS

001

All Dimensions are in Millimetres
 Break All Sharp Corners and
 Remove Burrs & Swarf

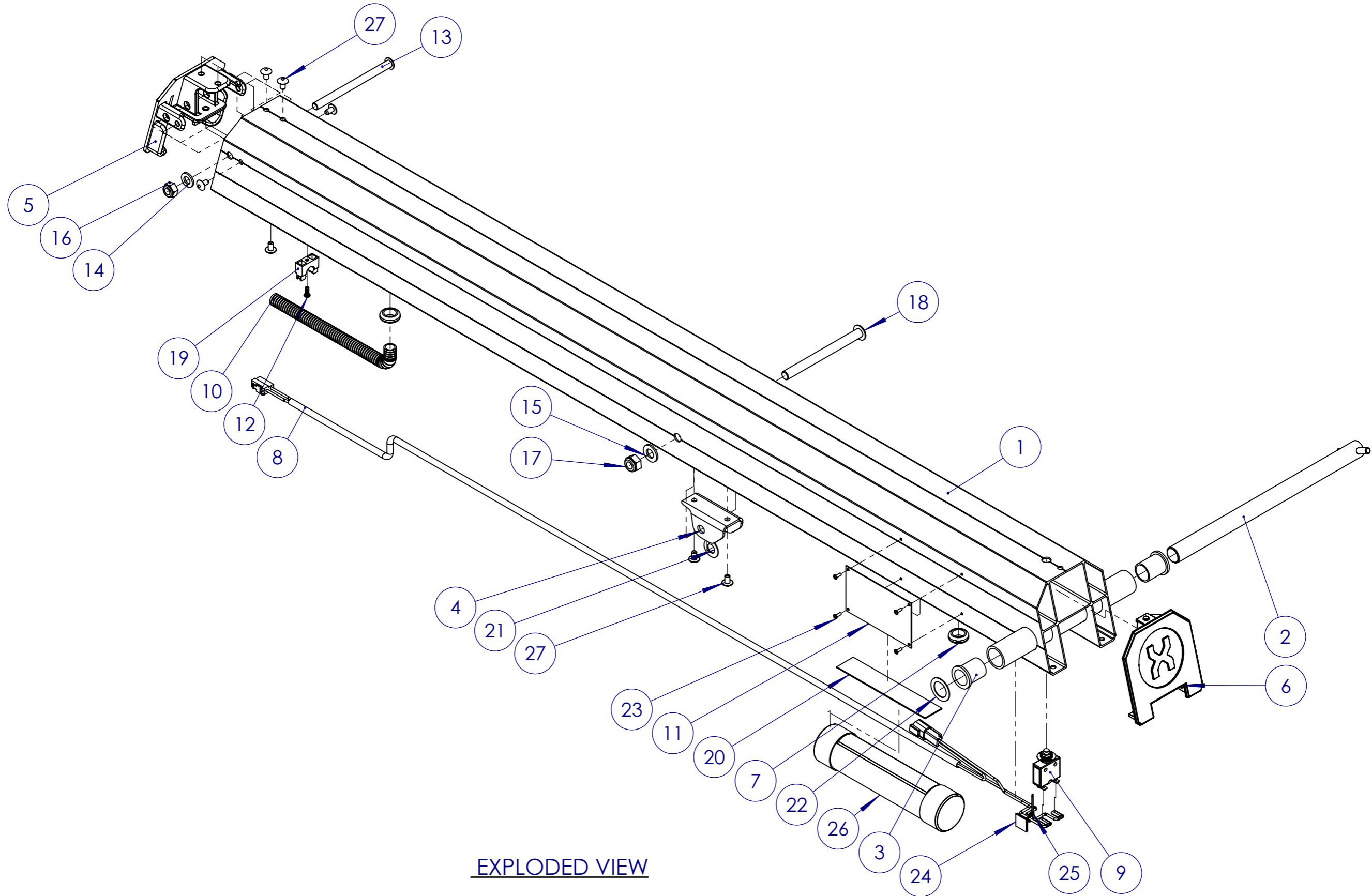
25
 Denotes Critical Dimension

NOTES: EXPLODED VIEW

SHEET 2 OF 15

PRINTED: 09/26/19

PRINT MAY BE REDUCED - DO NOT SCALE.



EXPLODED VIEW



Sydney (Head Office) Ph: 1300 795 953
 15 Waltham St Fax: (02) 9439 9815
 Artarmon, 2064 www.makinex.com.au
 NSW, Australia sales@makinex.com.au

COPYRIGHT 2015 MAKINEX.
 WARNING: Copyright in this drawing remains the property of MAKINEX and copying in whole or part is not permitted without the written authority of the copyright owner.

GENERAL TOLERANCES
 (Unless otherwise noted)
 0-100mm: ± 0.25 mm
 100mm - 500mm: ± 0.5 mm
 500mm +: ± 1.0 mm
 Angular: ± 1 deg.



DATE: 09/26/19

SCALE: D.N.S A3

All Dimensions are in Millimetres
 Break All Sharp Corners and
 Remove Burrs & Swarf

25
 Denotes Critical Dimension

PROJECT:

DWG NO.

PHT2-01

NOTES: EXPLODED VIEW

TITLE

PHT2 JIB ASSEMBLY

MATERIAL

SEE PART

FINISH

SEE PART

DRN: JT

MASS

002



SHEET 3 OF 15

PRINTED: 09/26/19

PRINT MAY BE REDUCED - DO NOT SCALE.

ITEM	PART NO.	PART NAME	QTY
1	PHT2-01-W1	JIB WELDMENT	1
2	PHT2-01-W2	JIB PIVOT BAR WELDMENT	1
3	PHT2-01-04	JIB SHAFT NYLON BUSH	2
4	PHT2-01-07	JIB ACTUATOR BRACKET	1
5	PHT2-01-08	JIB HOOK END CAP	1
6	PHT2-01-09	JIB BACK END CAP	1
7	MAK-UP-181	16MM GROMMET	2
8	PHT2-07-08	FORK MOTOR HARNESS	1
9	MAK-UP-36	CIRCUIT BREAKER 5A	1
10	MAK-UP-90	CONDUIT (0.26M)	1
11	PHT2-01-13	CE PLATE	1
12	MAK-UP-640	4.2X13.3 TEK SCREW	1
13	MAK-UP-636	M10X135 BUTTON HEAD SOCKET SCREW	1
14	MAK-UP-542	M10 FLAT WASHER (MEDIUM)	1
15	MAK-UP-537	M12 FLAT WASHER (MEDIUM)	1
16	MAK-UP-543	M10 NYLOC NUT	1
17	MAK-UP-548	M12 NYLOC NUT	1
18	MAK-UP-639	M12X140 BUTTON HEAD SOCKET SCREW	1
19	PHT2-01-11	PLASTIC CLAMP	1
20	PHT2-01-10	3M VELCRO STRIPS	1
21	MAK-UP-641	M12 NYLON FLAT WASHER	1
22	MAK-UP-642	M22 NYLON FLAT WASHER	1
23	MAK-UP-643	3.2X9 RIVET	4
24	MAK-UP-158	CABLE TIE MOUNT	1
25	MAK-UP-159	CABLE TIE 2X74	1
26	PHT2-01-12	MANUAL ASSEMBLY	1
27	MAK-UP-504	1/4" HUCK RIVET	7

EXPLODED BOM COMPONENTS

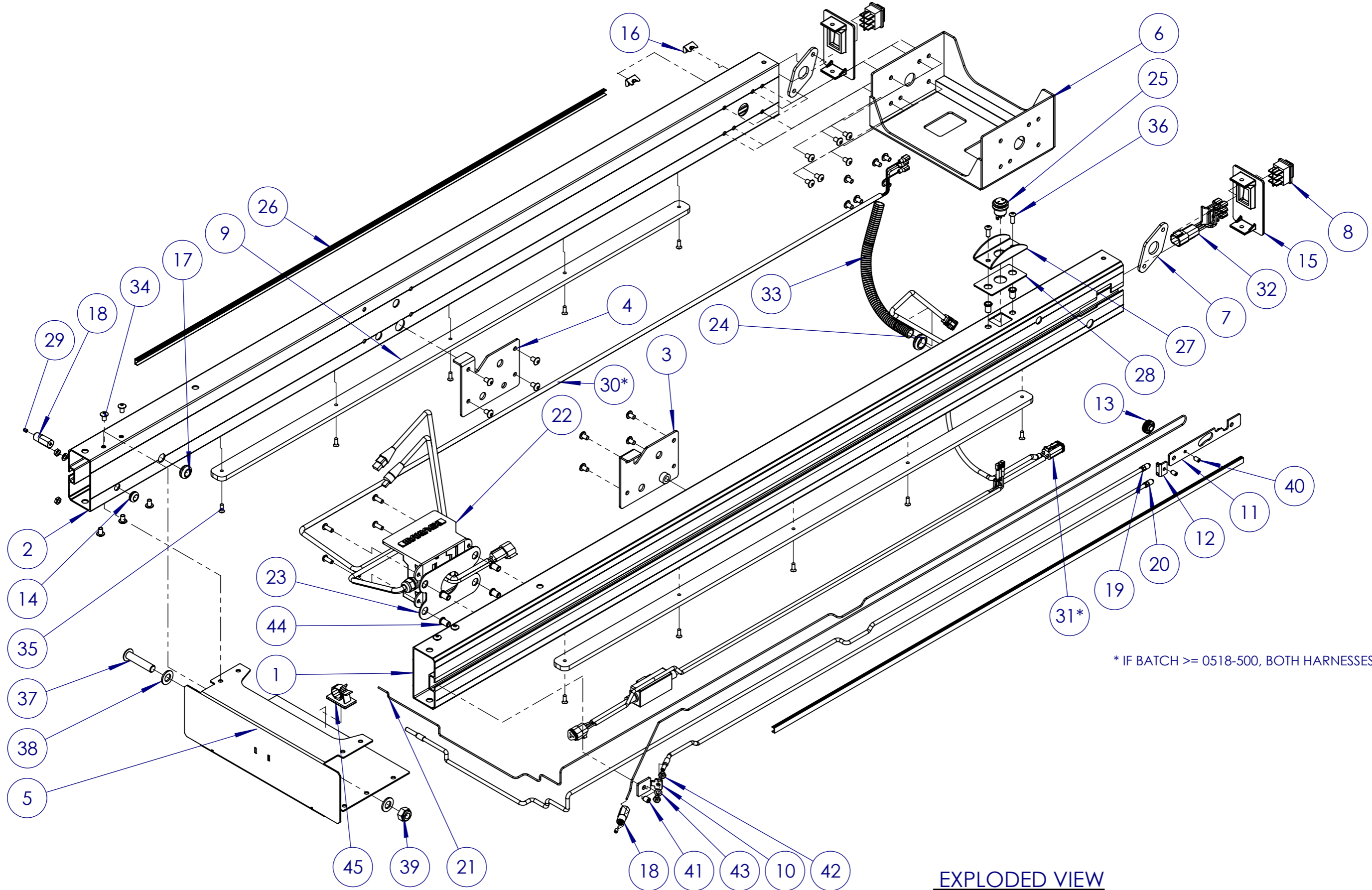
 <p>Sydney (Head Office) Ph: 1300 795 953 15 Waltham St Fax: (02) 9439 9815 Artarmon, 2064 www.makinex.com.au NSW, Australia sales@makinex.com.au</p>	COPYRIGHT 2015 MAKINEX. WARNING: Copyright in this drawing remains the property of MAKINEX and copying in whole or part is not permitted without the written authority of the copyright owner.		DATE: 09/26/19	PROJECT:				DRN: JT	
	GENERAL TOLERANCES (Unless otherwise noted) 0-100mm: ± 0.25 mm 100mm - 500mm: ± 0.5 mm 500mm +: ± 1.0 mm Angular: ± 1 deg.		SCALE: D.N.S A3	DWG NO.	TITLE	MATERIAL	FINISH	MASS	REV
	 Third Angle Projection - AS 1100		All Dimensions are in Millimetres Break All Sharp Corners and Remove Burrs & Swarf	PHT2-01	JIB ASSEMBLY BOM	SEE PART	SEE PART	002	SHEET 4 OF 15

NOTES: EXPLODED BOM

25
Denotes Critical Dimension

PRINTED: 09/26/19

PRINT MAY BE REDUCED - DO NOT SCALE.



* IF BATCH >= 0518-500, BOTH HARNESSES WILL BE V2

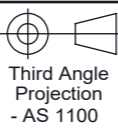
EXPLODED VIEW



Sydney (Head Office) Ph: 1300 795 953
 15 Waltham St Fax: (02) 9439 9815
 Artarmon, 2064 www.makinex.com.au
 NSW, Australia sales@makinex.com.au

COPYRIGHT 2013 MAKINEX.
 WARNING: Copyright in this drawing remains the property of MAKINEX and copying in whole or part is not permitted without the written authority of the copyright owner.

GENERAL TOLERANCES
 (Unless otherwise noted)
 0-100mm: ± 0.25 mm
 100mm - 500mm: ± 0.5 mm
 500mm +: ± 1.0 mm
 Angular: ± 1 deg.



DATE: 09/26/19
 SCALE: D.N.S A3
 All Dimensions are in Millimetres
 Break All Sharp Corners and
 Remove Burrs & Swarf



PROJECT: PHT2

DWG NO. PHT2-02

NOTES: EXPLODED VIEW

TITLE PHT2 FRAME ASSEMBLY

MATERIAL SEE PARTS

FINISH SEE PARTS

DRN: JT
 MASS REV
 002

SHEET 5 OF 15



PRINTED: 09/26/19

PRINT MAY BE REDUCED - DO NOT SCALE.

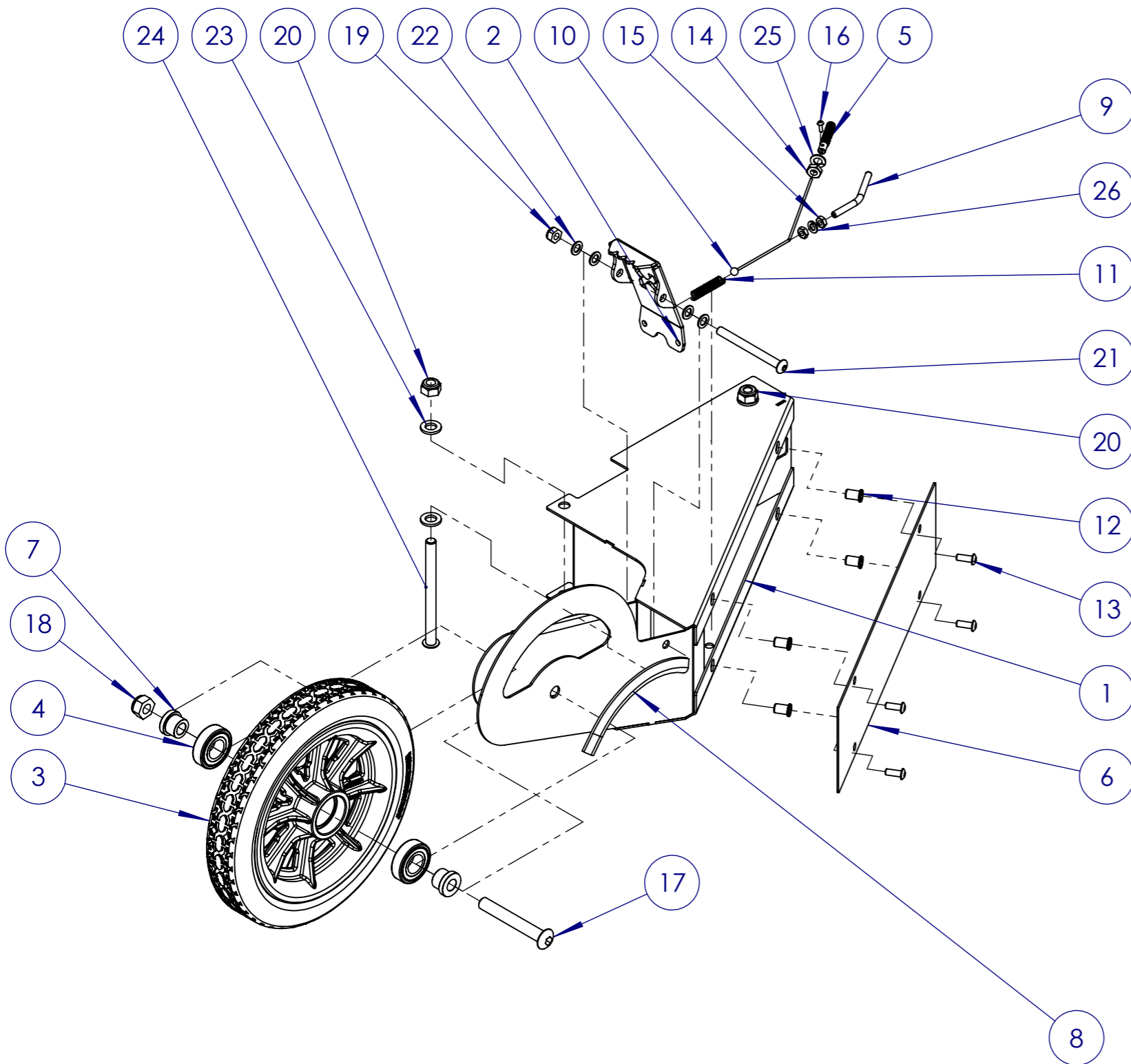
ITEM	PART NO.	PART NAME	QTY	ITEM	PART NO.	PART NAME	QTY
1	PHT2-02-01	FRAME EXTRUSION LEFT	1	24	PHT2-02-29	ON/OFF SWITCH	1
2	PHT2-02-02	FRAME EXTRUSION RIGHT	1	25	PHT2-02-30	EXTRUSION CONDUIT COVER-1056MM	2
3	PHT2-02-W1	FOLD WHEEL LOCK PLATE LEFT WELDMENT	1	26	MAK-UP-181	16MM GROMMET	1
4	PHT2-02-W2	FOLD WHEEL LOCK PLATE RIGHT WELDMENT	1	27	PHT2-02-32	ON/OFF SWITCH BRACKET	1
5	PHT2-02-W3	ACTUATOR MOUNT BRACKET WELDMENT	1	28	PHT2-02-33	ON/OFF SWITCH BRACKET GASKET	1
6	PHT2-02-W4	JIB TOP BRACKET WELDMENT	1	29	PHT2-03-16	CABLE NIPPLES	2
7	PHT2-02-09	JIB SHAFT BACK PLATE	2	30*	PHT2-07-06-01	POWER & ACTION HARNESS	1
8	MAK-UP-30	LINAK ROCKER SWITCH	2		PHT2-07-06-01-V2	POWER & ACTION HARNESS V2	
9	PHT2-02-12	HDPE SKID	2	31*	PHT2-07-06-02	PROTECTOR HARNESS	1
10	PHT2-02-13	BRAKE CABLE HOUSING BOTTOM	1		PHT2-07-06-02-V2	PROTECTOR HARNESS V2	
11	PHT2-02-14	LEFT HANDLE MOUNTING PLATE	1	32	PHT2-07-07	FORK SWITCH HARNESS	1
12	PHT2-02-15	LEFT HANDLE CABLE BRACKET	1	33	MAK-UP-90	CONDUIT (0.36M)	1
13	PHT2-02-16	21MM PULLEY	1	34	MAK-UP-504	1/4" HUCK RIVET	30
14	MAK-UP-182	10MM GROMMET	1	35	MAK-UP-644	3/16" COUNTERSUNK RIVET	10
15	PHT2-02-18	FRAME END CAP	2	36	MAK-UP-581	M6X16 BUTTON HEAD SOCKET SCREW	6
16	PHT2-02-20	RIGHT HANDLE MOUNTING PLATE	2	37	MAK-UP-646	M12X55 BUTTON HEAD SOCKET SCREW	1
17	MAK-UP-183	12MM GROMMET	1	38	MAK-UP-537	M12 FLAT WASHER (MEDIUM)	2
18	PHT2-02-22	BRAKE ADJUSTER FEMALE	2	39	MAK-UP-548	M12 NYLOC NUT	1
19	PHT2-02-23	LONG BRAKE CABLE 1650MM (TIP TO TIP)	1	40	MAK-UP-645	M6X10 GRUB SCREW	2
20	PHT2-02-24	SHORT BRAKE CABLE 1150 (TIP TO TIP)	1	41	MAK-UP-687	M8X10 GRUB SCREW	1
21	PHT2-02-25	CABLE WIRE (MAIN) 3300MM	1	42	MAK-UP-507	M6 HEX NUT	4
22	PHT2-02-26	BATTERY MOUNT	1	43	MAK-UP-506	M6 SPRING WASHER	2
23	PHT2-02-27	BATTERY MOUNT GASKET	1	44	MAK-UP-574	M6 RIVNUT	6
				45	PHT2-02-34	PLASTIC CLAMP 2	1

* IF BATCH >= 0518-500, BOTH HARNESSES WILL BE V2

EXPLODED BOM COMPONENTS

 <p>Sydney (Head Office) Ph: 1300 795 953 15 Waltham St Fax: (02) 9439 9815 Artarmon, 2064 www.makinex.com.au NSW, Australia sales@makinex.com.au</p>	COPYRIGHT 2013 MAKINEX. WARNING: Copyright in this drawing remains the property of MAKINEX and copying in whole or part is not permitted without the written authority of the copyright owner.		DATE: 09/26/19	PROJECT: PHT2				DRN: JT	
	GENERAL TOLERANCES (Unless otherwise noted) 0-100mm: ± 0.25 mm 100mm - 500mm: ± 0.5 mm 500mm +: ± 1.0 mm Angular: ± 1 deg.		SCALE: D.N.S A3	DWG NO. PHT2-02	TITLE PHT2 FRAME ASSY BOM	MATERIAL SEE PARTS	FINISH SEE PARTS	MASS 	REV 002
	 Third Angle Projection - AS 1100		All Dimensions are in Millimetres Break All Sharp Corners and Remove Burrs & Swarf	NOTES: EXPLODED BOM		SHEET 6 OF 15		PRINTED: 09/26/19	

PRINT MAY BE REDUCED - DO NOT SCALE.



ITEM	PART NO.	PART NAME	QTY
1	PHT2-03L-W	LEFT WHEEL WELDMENT	1
2	PHT2-03-07	BRAKE PAD	1
3	MAK-UP-00	250MM MAKINEX WHEEL	1
4	MAK-UP-01	WHEEL BEARING	2
5	PHT2-03-09	BRAKE ADJUSTER MALE	1
6	PHT2-03-10	COVER SM	1
7	PHT2-03-11	WHEEL BEARING SLEEVE	2
8	PHT2-03-12	PINCHWELD	1
9	PHT2-03-13	LEFT BRAKE CABLE HOUSING	1
10	PHT2-03-15	BALL CRIMPED CABLE WIRE (BRAKE PAD)	1
11	PHT2-03-18	COMPRESSION SPRING	1
12	MAK-UP-574	M6 RIVNUT	4
13	MAK-UP-581	M6X16 BUTTON HEAD SOCKET SCREW	4
14	MAK-UP-517	M8 HEX NUT	1
15	MAK-UP-507	M6 HEX NUT	2
16	MAK-UP-647	M3X10 PAN PHILLIPS HEAD BOLT	1
17	MAK-UP-648	M12X85 BUTTON HEAD SOCKET SCREW	1
18	MAK-UP-548	M12 NYLOC NUT	1
19	MAK-UP-511	M8 NYLOC NUT	1
20	MAK-UP-543	M10 NYLOC NUT	2
21	MAK-UP-649	M8X85 BUTTON HEAD SOCKET SCREW	1
22	MAK-UP-535	M8 FLAT WASHER (MEDIUM)	4
23	MAK-UP-542	M10 FLAT WASHER (MEDIUM)	4
24	MAK-UP-636	M10X135 BUTTON HEAD SOCKET SCREW	2
25	MAK-UP-516	M8 SPRING WASHER	1
26	MAK-UP-506	M6 SPRING WASHER	1

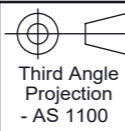
EXPLODED VIEW



Sydney (Head Office) Ph: 1300 795 953
 15 Waltham St Fax: (02) 9439 9815
 Artarmon, 2064 www.makinex.com.au
 NSW, Australia sales@makinex.com.au

COPYRIGHT 2015 MAKINEX.
 WARNING: Copyright in this drawing remains the property of MAKINEX and copying in whole or part is not permitted without the written authority of the copyright owner.

GENERAL TOLERANCES
 (Unless otherwise noted)
 0-100mm: ± 0.25 mm
 100mm - 500mm: ± 0.5 mm
 500mm +: ± 1.0 mm
 Angular: ± 1 deg.



DATE: 09/26/19

SCALE: D.N.S A3

All Dimensions are in Millimetres
 Break All Sharp Corners and
 Remove Burrs & Swarf

25
 Denotes Critical Dimension

PROJECT:

DWG NO.

PHT02-03L

NOTES: EXPLODED VIEW

TITLE

PHT2 LEFT WHEEL ASSEMBLY

MATERIAL

SEE PART

FINISH

SEE PART

DRN: JT

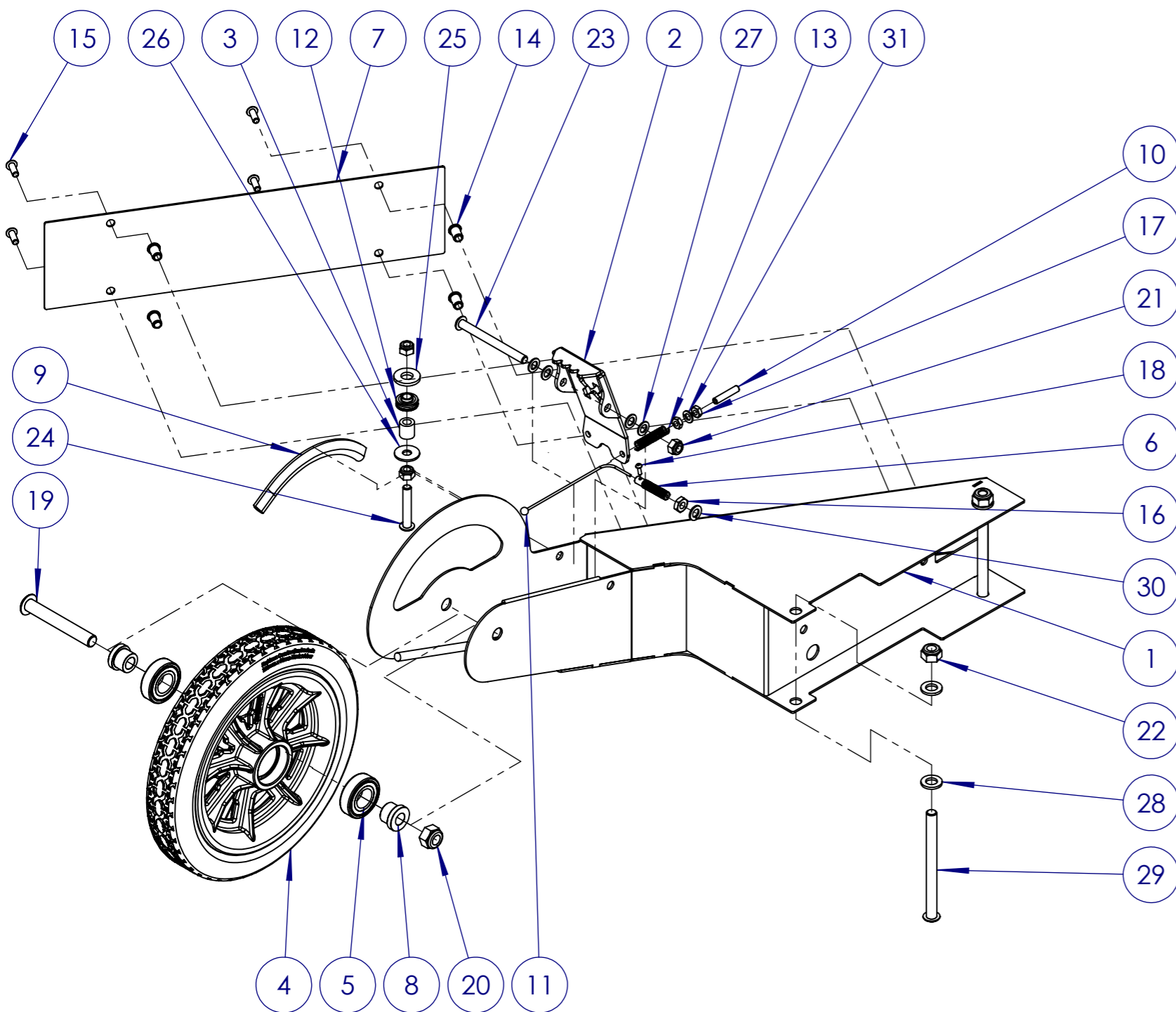
MASS

REV

SHEET 7 OF 15

PRINTED: 09/26/19

PRINT MAY BE REDUCED - DO NOT SCALE.



EXPLODED VIEW

ITEM	PART NO.	PART NAME	QTY
1	PHT2-03R-W	RIGHT WHEEL WELDMENT	1
2	PHT2-03-07	BRAKE PAD	1
3	PHT2-03-04	NYLON SLEEVE	1
4	MAK-UP-00	250MM MAKINEX WHEEL	1
5	MAK-UP-01	WHEEL BEARING	2
6	PHT2-03-09	BRAKE ADJUSTER MALE	1
7	PHT2-03-10	COVER SM	1
8	PHT2-03-11	WHEEL BEARING SLEEVE	2
9	PHT2-03-12	PINCHWELD	1
10	PHT2-03-14	RIGHT BRAKE CABLE HOUSING	1
11	PHT2-03-15	BALL CRIMPED CABLE WIRE (BRAKE PAD)	1
12	PHT2-02-16	21MM PULLEY	1
13	PHT2-03-18	COMPRESSION SPRING	1
14	MAK-UP-574	M6 RIVNUT	4
15	MAK-UP-581	M6X16 BUTTON HEAD SOCKET SCREW	4
16	MAK-UP-517	M8 HEX NUT	1
17	MAK-UP-507	M6 HEX NUT	2
18	MAK-UP-647	M3X10 PAN PHILLIPS HEAD BOLT	1
19	MAK-UP-648	M12X85 BUTTON HEAD SOCKET SCREW	1
20	MAK-UP-548	M12 NYLOC NUT	1
21	MAK-UP-511	M8 NYLOC NUT	3
22	MAK-UP-543	M10 NYLOC NUT	2
23	MAK-UP-649	M8X85 BUTTON HEAD SOCKET SCREW	1
24	MAK-UP-651	M8X45 BUTTON HEAD SOCKET SCREW	1
25	MAK-UP-652	M11.5 FLAT WASHER (MEDIUM)	1
26	MAK-UP-637	M8 FLAT WASHER (OD: 24MM)	1
27	MAK-UP-535	M8 FLAT WASHER (MEDIUM)	4
28	MAK-UP-542	M10 FLAT WASHER (MEDIUM)	4
29	MAK-UP-636	M10X135 BUTTON HEAD SOCKET SCREW	2
30	MAK-UP-516	M8 SPRING WASHER	1
31	MAK-UP-506	M6 SPRING WASHER	1



Sydney (Head Office) Ph: 1300 795 953
 15 Waltham St Fax: (02) 9439 9815
 Artarmon, 2064 www.makinex.com.au
 NSW, Australia sales@makinex.com.au

COPYRIGHT 2015 MAKINEX.
 WARNING: Copyright in this drawing remains the property of MAKINEX and copying in whole or part is not permitted without the written authority of the copyright owner.

GENERAL TOLERANCES
 (Unless otherwise noted)
 0-100mm: ± 0.25 mm
 100mm - 500mm: ± 0.5 mm
 500mm +: ± 1.0 mm
 Angular: ± 1 deg.

Third Angle Projection
 - AS 1100

DATE: 09/26/19

SCALE: D.N.S A3

All Dimensions are in Millimetres
 Break All Sharp Corners and
 Remove Burrs & Swarf

25
 Denotes Critical Dimension

PROJECT:

DWG NO.

PHT2-03R

NOTES: EXPLODED VIEW

TITLE

PHT2 RIGHT WHEEL ASSEMBLY

MATERIAL

SEE PARTS

FINISH

SEE PARTS

DRN: MWC

MASS

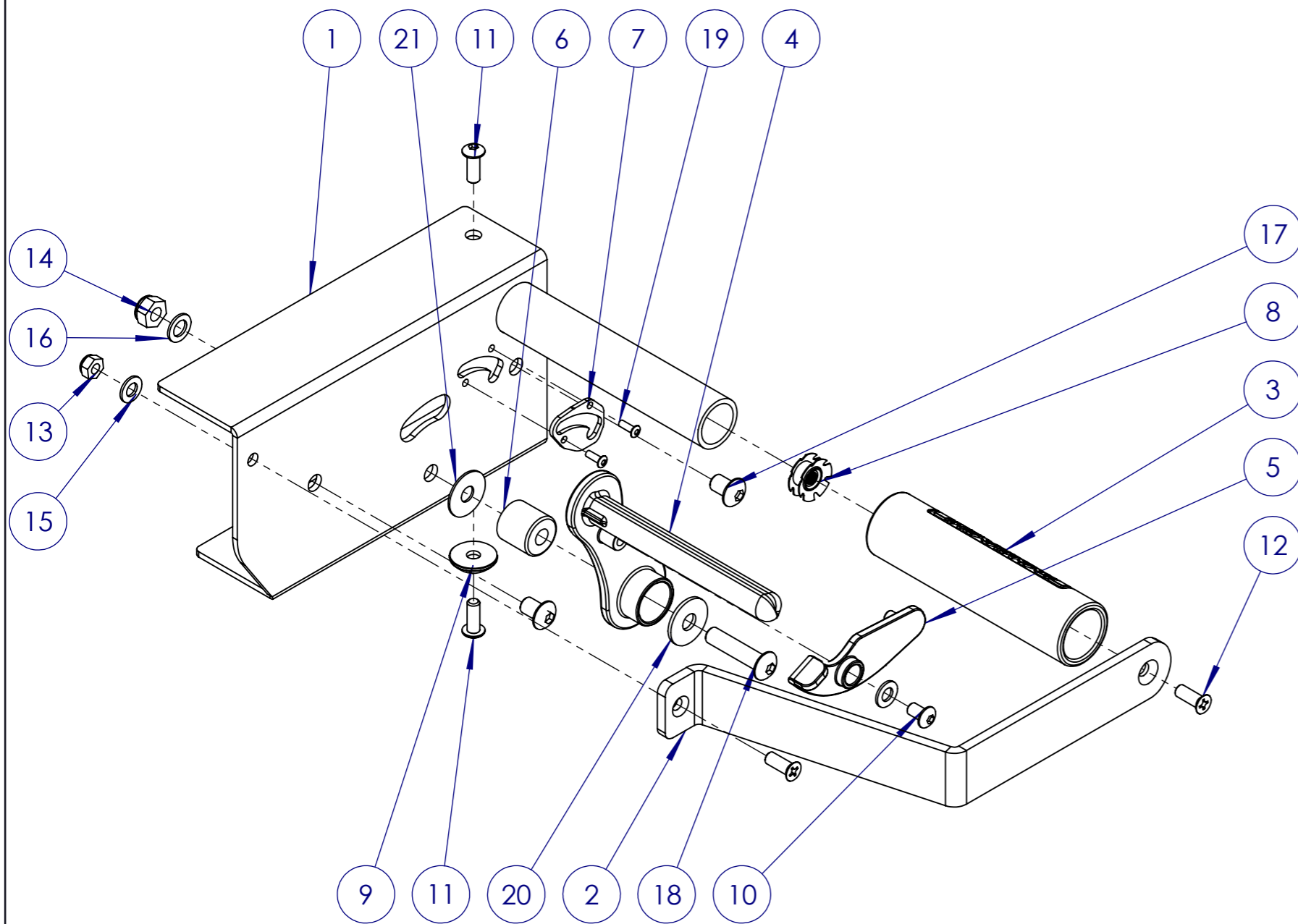
REV

002

SHEET 8 OF 15

PRINTED: 09/26/19

PRINT MAY BE REDUCED - DO NOT SCALE.



EXPLODED VIEW

ITEM	PART NO.	PART NAME	QTY
1	PHT2-04L-W	LEFT HANDLE WELDMENT	1
2	PHT2-04-03	HANDLE FLAT BAR	1
3	PHT2-04-05	FOAM GRIP	1
4	PHT2-04-06	BRAKE LEVER	1
5	PHT2-04-07	LOCKING LATCH	1
6	PHT2-04-08	STUD 20X19	1
7	PHT2-04-09	HANDLE LOCK FLAT PLATE	1
8	PHT2-04-10	M6 TUBE INSERT	1
9	PHT2-04-11	CONICAL WASHER	1
10	MAK-UP-567	M6X10 BUTTON HEAD SOCKET SCREW	1
11	MAK-UP-581	M6X16 BUTTON HEAD SOCKET SCREW	2
12	MAK-UP-653	M6X16 COUNTERSUNK PHILIPS HEAD BOLT	2
13	MAK-UP-503	M6 NYLOC NUT	1
14	MAK-UP-511	M8 NYLOC NUT	1
15	MAK-UP-564	M6 FLAT WASHER (MEDIUM)	2
16	MAK-UP-535	M8 FLAT WASHER (MEDIUM)	1
17	MAK-UP-655	M8X12 BUTTON HEAD SOCKET SCREW	2
18	MAK-UP-656	M8X35 BUTTON HEAD SOCKET SCREW	1
19	MAK-UP-643	3.2X9 RIVET	2
20	MAK-UP-637	M8 FLAT WASHER (OD: 24MM)	1
21	MAK-UP-663	M8 THIN FLAT WASHER (OD:23 MM)	1



Sydney (Head Office) Ph: 1300 795 953
 15 Waltham St Fax: (02) 9439 9815
 Artarmon, 2064 www.makinex.com.au
 NSW, Australia sales@makinex.com.au

COPYRIGHT 2013 MAKINEX.
 WARNING: Copyright in this drawing remains the property of MAKINEX and copying in whole or part is not permitted without the written authority of the copyright owner.

GENERAL TOLERANCES
 (Unless otherwise noted)
 0-100mm: ± 0.25 mm
 100mm - 500mm: ± 0.5 mm
 500mm +: ± 1.0 mm
 Angular: ± 1 deg.

Third Angle Projection
 - AS 1100

DATE: 09/26/19

SCALE: D.N.S A3

All Dimensions are in Millimetres
 Break All Sharp Corners and
 Remove Burrs & Swarf

25
 Denotes Critical Dimension

PROJECT:

DWG NO.

PHT2-04L

NOTES:

TITLE

LEFT HANDLE ASSEMBLY

MATERIAL

SEE PARTS

FINISH

SEE PARTS

DRN: MWC

MASS

934.47 G

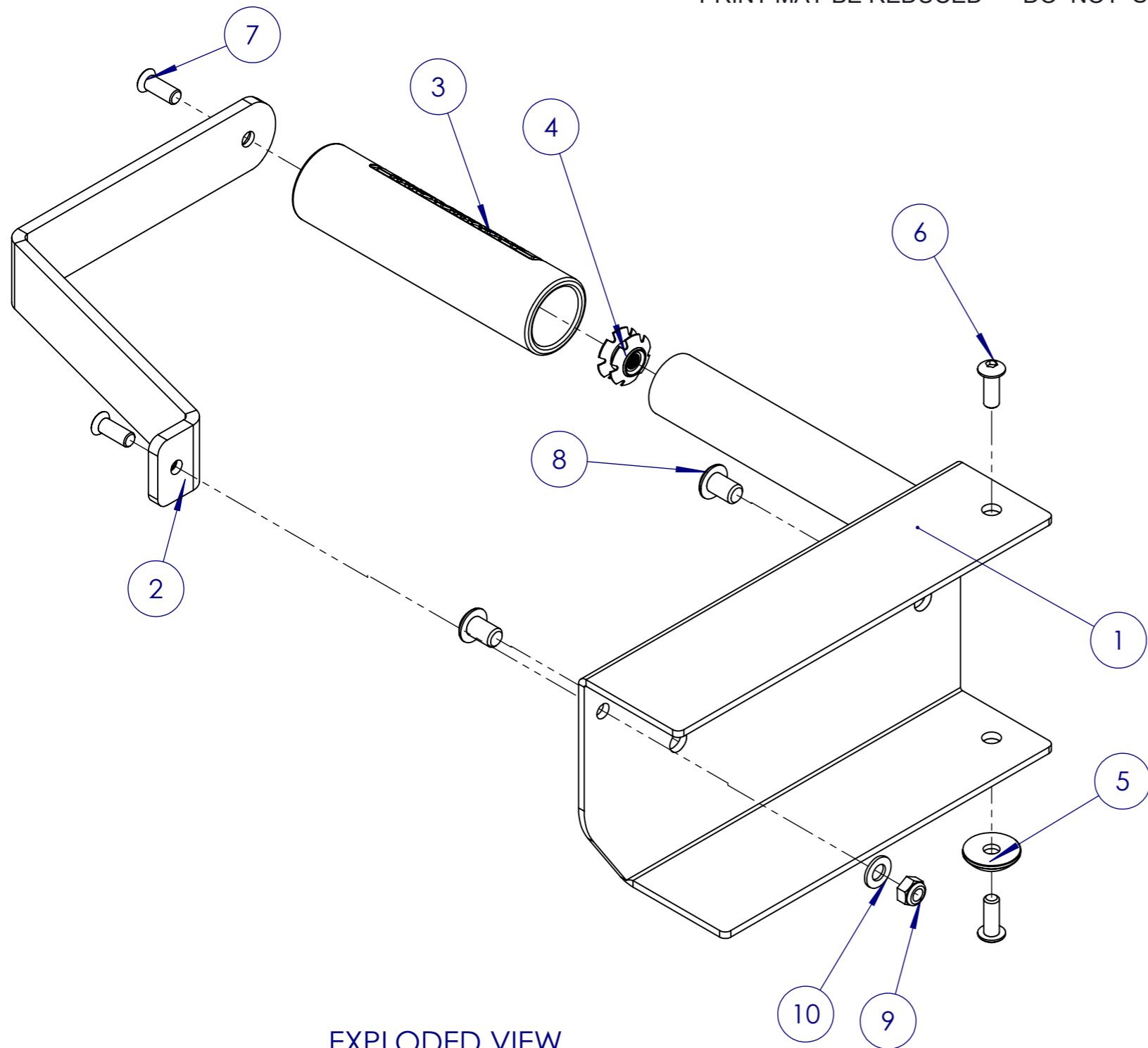
REV

002

SHEET 9 OF 15

PRINTED: 09/26/19

PRINT MAY BE REDUCED - DO NOT SCALE.



EXPLODED VIEW

ITEM	ITEM NO.	PART NAME	QTY
1	PHT2-04R-W	RIGHT HANDLE WELDMENT	1
2	PHT2-04-03	HANDLE FLAT BAR	1
3	PHT2-04-05	FOAM GRIP	1
4	PHT2-04-10	M6 TUBE INSERT	1
5	PHT2-04-11	CONICAL WASHER	1
6	MAK-UP-581	M6X16 BUTTON HEAD SOCKET SCREW	2
7	MAK-UP-653	M6X16 COUNTERSUNK PHILIPS HEAD BOLT	2
8	MAK-UP-655	M8X12 BUTTON HEAD SOCKET SCREW	2
9	MAK-UP-503	M6 NYLOC NUT	1
10	MAK-UP-564	M6 FLAT WASHER (MEDIUM)	1



Sydney (Head Office) Ph: 1300 795 953
 15 Waltham St Fax: (02) 9439 9815
 Artarmon, 2064 www.makinex.com.au
 NSW, Australia sales@makinex.com.au

COPYRIGHT 2015 MAKINEX.
 WARNING: Copyright in this drawing remains the property of MAKINEX and copying in whole or part is not permitted without the written authority of the copyright owner.

GENERAL TOLERANCES
 (Unless otherwise noted)
 0-100mm: ± 0.25 mm
 100mm - 500mm: ± 0.5 mm
 500mm +: ± 1.0 mm
 Angular: ± 1 deg.

Third Angle Projection
 - AS 1100

DATE: 09/26/19

SCALE: D.N.S A3

All Dimensions are in Millimetres
 Break All Sharp Corners and
 Remove Burrs & Swarf

25
 Denotes Critical Dimension

PROJECT:

DWG NO.

PHT2-04R

NOTES: EXPLODED VIEW

TITLE

PHT2 RIGHT HANDLE ASSEMBLY

MATERIAL

SEE PART

FINISH

SEE PART

DRN: MWC

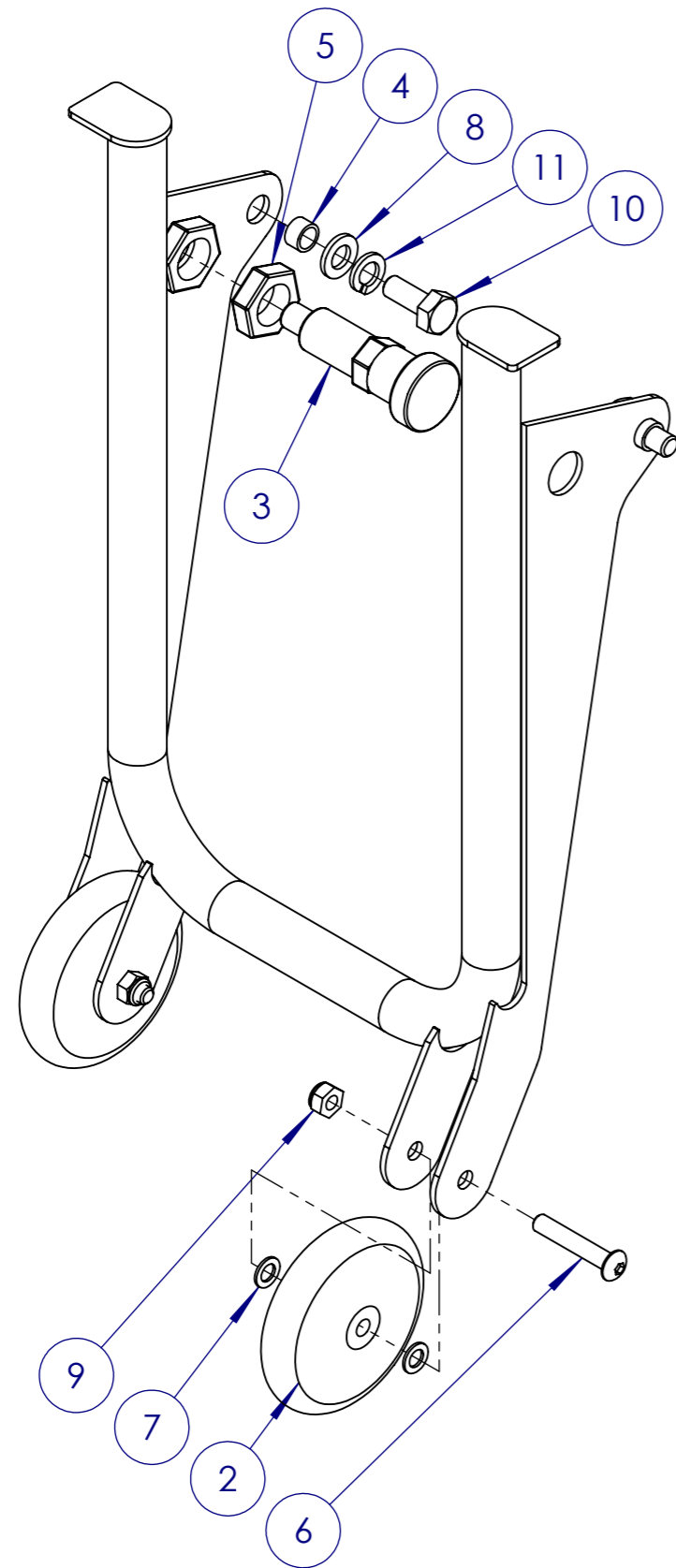
MASS

001

SHEET 10 OF 15

PRINTED: 09/26/19

PRINT MAY BE REDUCED - DO NOT SCALE.



EXPLODED VIEW

ITEM	PART NO.	PART NAME	QTY
1	PHT2-05-W	FOLD WHEEL WELDMENT	1
2	PHT2-05-05	FOLD WHEEL	2
3	PHT2-05-06	INDEXING PLUNGER	1
4	PHT2-05-07	FLANGED SLEEVE BEARING	2
5	PHT2-05-08	INDEXING PLUNGER NUT	1
6	MAK-UP-651	M8X45 BUTTON HEAD SOCKET SCREW	2
7	MAK-UP-535	M8 FLAT WASHER (MEDIUM)	4
8	MAK-UP-542	M10 FLAT WASHER (MEDIUM)	2
9	MAK-UP-511	M8 NYLOC NUT	2
10	MAK-UP-553	M10X25 HEX BOLT Z/P	2
11	MAK-UP-657	M10 SPRING WASHER	2



Sydney (Head Office) Ph: 1300 795 953
 15 Waltham St Fax: (02) 9439 9815
 Artarmon, 2064 www.makinex.com.au
 NSW, Australia sales@makinex.com.au

COPYRIGHT 2013 MAKINEX.
 WARNING: Copyright in this drawing remains the property of MAKINEX and copying in whole or part is not permitted without the written authority of the copyright owner.

GENERAL TOLERANCES
 (Unless otherwise noted)
 0-100mm: ± 0.25 mm
 100mm - 500mm: ± 0.5 mm
 500mm +: ± 1.0 mm
 Angular: ± 1 deg.

Third Angle Projection
 - AS 1100

DATE: 09/26/19

SCALE: D.N.S A3

All Dimensions are in Millimetres
 Break All Sharp Corners and
 Remove Burrs & Swarf

25
 Denotes Critical Dimension

PROJECT: PHT2

DWG NO.

PHT2-05

NOTES: EXPLODED VIEW

TITLE

PHT2 FOLD WHEEL ASSEMBLY

MATERIAL

SEE PARTS

FINISH

SEE PARTS

DRN: MWC

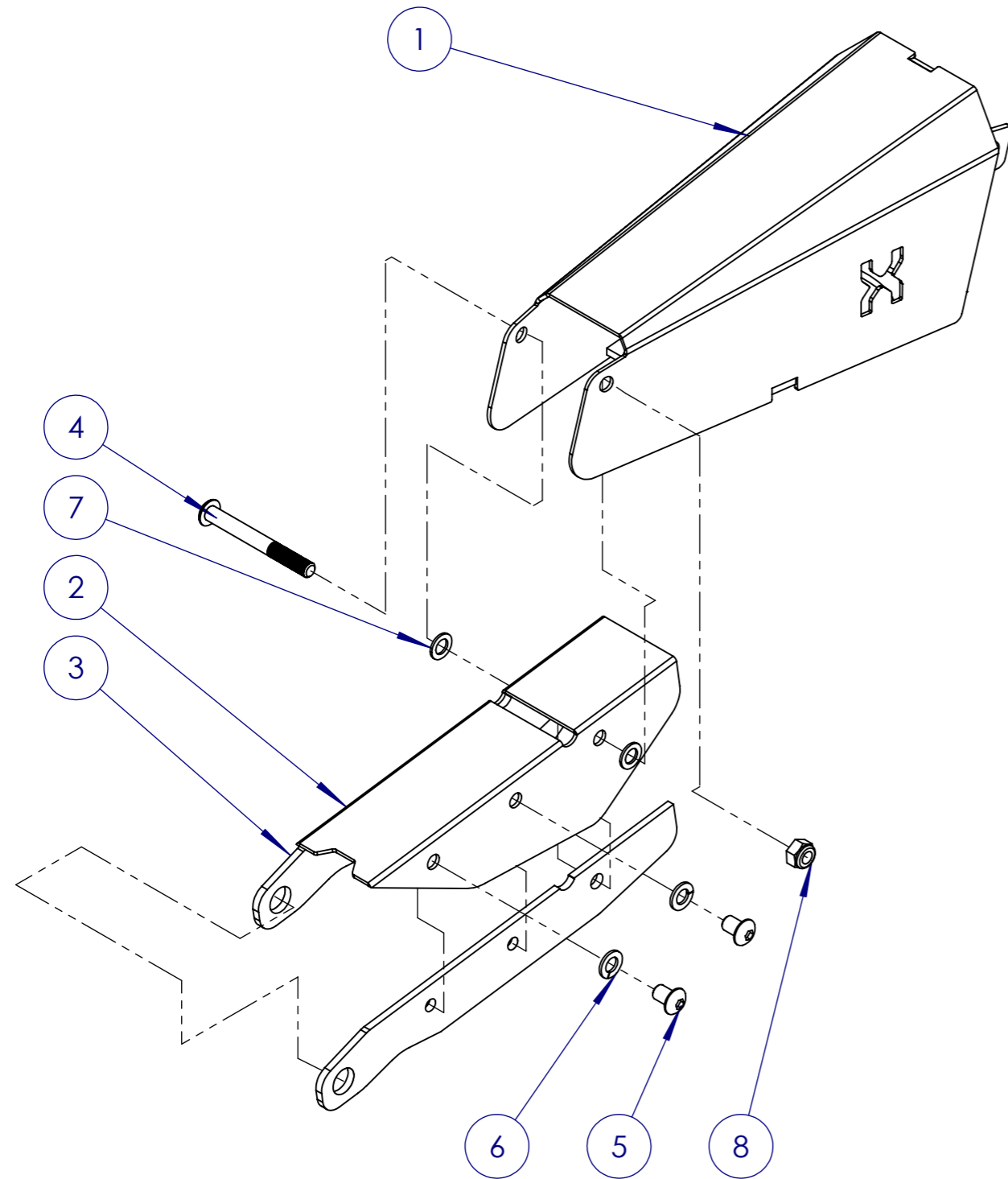
MASS

001

SHEET 11 OF 15

PRINTED: 09/26/19

PRINT MAY BE REDUCED - DO NOT SCALE.



EXPLODED VIEW

ITEM	PART NO.	PART NAME	QTY
1	PHT2-06-W	JIB HOOK ADAPTOR WELDMENT	1
2	PHT2-06-03	NOSE LINK	1
3	PHT2-06-04	NOSE LINK FLAT BAR	2
4	MAK-UP-658	M8X70 BUTTON HEAD SOCKET SCREW	1
5	MAK-UP-655	M8X12 BUTTON HEAD SOCKET SCREW	4
6	MAK-UP-516	M8 SPRING WASHER	4
7	MAK-UP-535	M8 FLAT WASHER (MEDIUM)	2
8	MAK-UP-511	M8 NYLOC NUT	1



Sydney (Head Office) Ph: 1300 795 953
 15 Waltham St Fax: (02) 9439 9815
 Artarmon, 2064 www.makinex.com.au
 NSW, Australia sales@makinex.com.au

COPYRIGHT 2015 MAKINEX.
 WARNING: Copyright in this drawing remains the property of MAKINEX and copying in whole or part is not permitted without the written authority of the copyright owner.

GENERAL TOLERANCES
 (Unless otherwise noted)
 0-100mm: ± 0.25 mm
 100mm - 500mm: ± 0.5 mm
 500mm +: ± 1.0 mm
 Angular: ± 1 deg.



DATE: 09/26/19

SCALE: D.N.S | A3

All Dimensions are in Millimetres
 Break All Sharp Corners and
 Remove Burrs & Swarf



PROJECT: PHT2

DWG NO.

PHT2-06

TITLE

PHT2 NOSE HOOK ASSEMBLY

MATERIAL

MS350

FINISH

SEE PARTS

DRN: MWC

MASS

REV

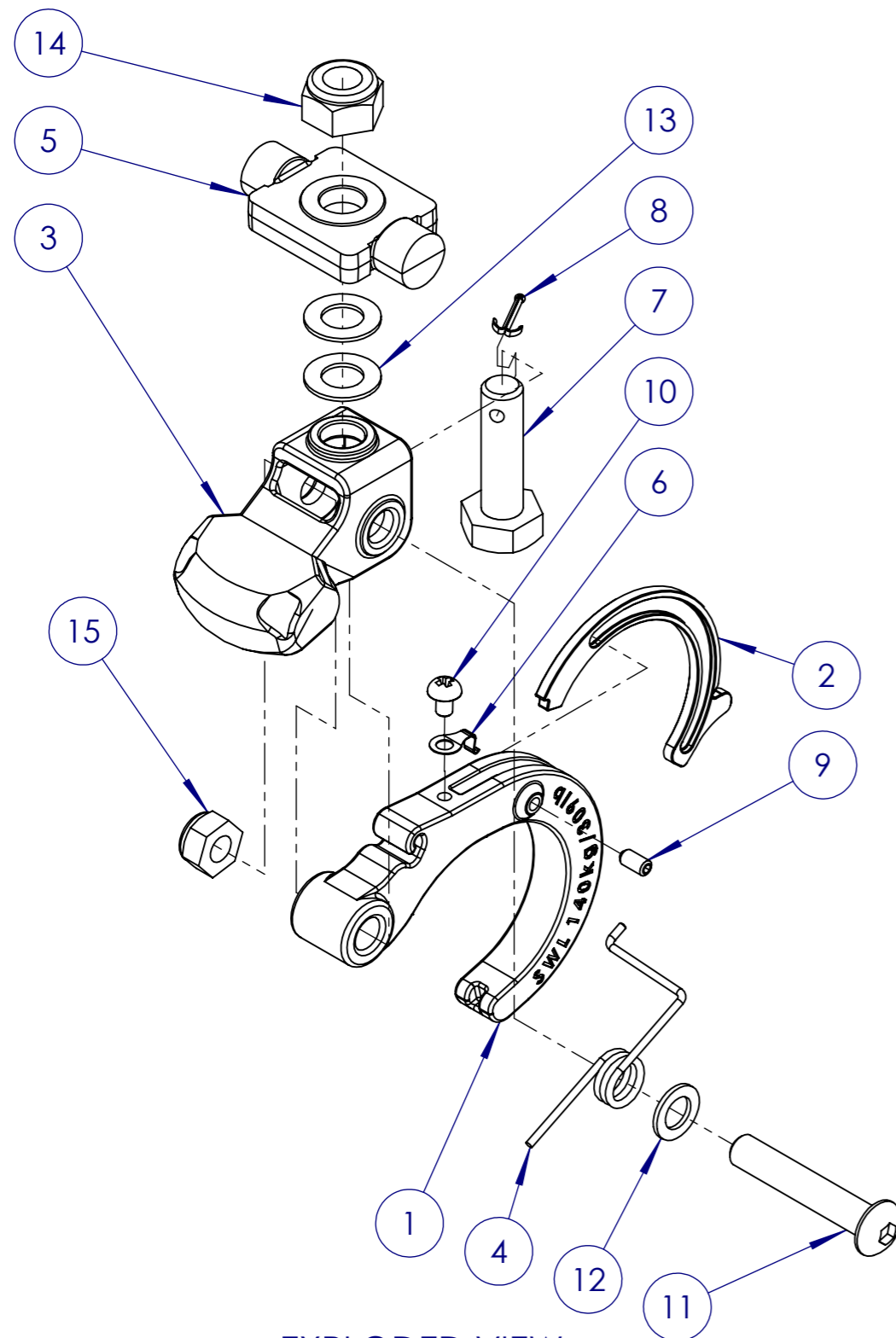
002

NOTES: EXPLODED VIEW

SHEET 12 OF 15

PRINTED: 09/26/19

PRINT MAY BE REDUCED - DO NOT SCALE.



EXPLODED VIEW

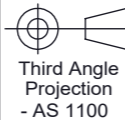
ITEM	PART NO.	PART NAME	QTY
1	PHT2-06-07	NEW HOOK	1
2	PHT2-06-08	HOOK CATCH	1
3	PHT2-06-06	HOOK YOKE	1
4	PHT2-06-09	TORSIONAL SPRING	1
5	PHT2-06-05	SWIVEL PLATE	1
6	PHT2-06-11	LEAF SPRING	1
7	PHT2-06-12	M10X35 CUSTOM HEX BOLT	1
8	MAK-UP-185	1.6MMX10 SPLIT PIN	1
9	MAK-UP-659	M4X8 GRUB SCREW	1
10	MAK-UP-660	M4X6 PP BOLT	1
11	MAK-UP-651	M8X45 BUTTON HEAD SOCKET SCREW	1
12	MAK-UP-535	M8 FLAT WASHER (MEDIUM)	1
13	MAK-UP-661	M10 THIN FLAT WASHER (SMALL)	2
14	MAK-UP-543	M10 NYLOC NUT	1
15	MAK-UP-511	M8 NYLOC NUT	1



Sydney (Head Office) Ph: 1300 795 953
 15 Waltham St Fax: (02) 9439 9815
 Artarmon, 2064 www.makinex.com.au
 NSW, Australia sales@makinex.com.au

COPYRIGHT 2015 MAKINEX.
 WARNING: Copyright in this drawing remains the property of MAKINEX and copying in whole or part is not permitted without the written authority of the copyright owner.

GENERAL TOLERANCES
 (Unless otherwise noted)
 0-100mm: ± 0.25 mm
 100mm - 500mm: ± 0.5 mm
 500mm +: ± 1.0 mm
 Angular: ± 1 deg.



DATE: 09/26/19

SCALE: D.N.S A3

All Dimensions are in Millimetres
 Break All Sharp Corners and
 Remove Burrs & Swarf



PROJECT: PHT2

DWG NO.

PHT2-06-A

TITLE

PHT2 HOOK ASSEMBLY

MATERIAL

SEE PARTS

FINISH

SEE PARTS

DRN: JT

MASS

002

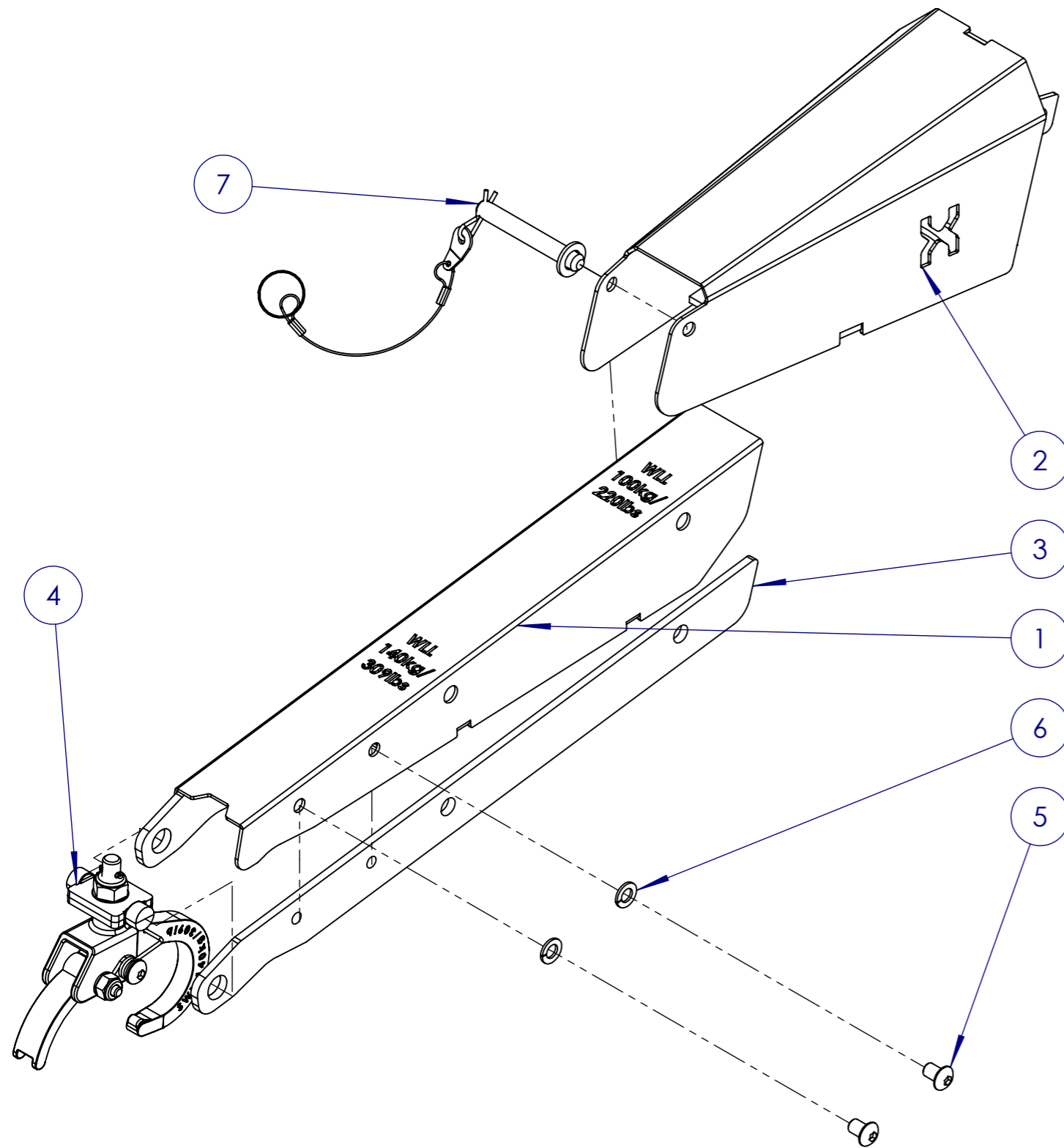
REV

NOTES: EXPLODED VIEW

SHEET 13 OF 15

PRINTED: 09/26/19

PRINT MAY BE REDUCED - DO NOT SCALE.



ITEM	PART NO.	PART NAME	QTY
1	PHT2-08-W2	EXTENDED NOSE LINK WELDMENT	1
2	PHT2-06-W	JIB HOOK ADAPTOR WELDMENT	1
3	PHT2-08-10	EXTENDED NOSE LINK FLAT BAR	2
4	PHT2-08-A	SELF CLOSING HOOK ASSEMBLY	1
5	MAK-UP-655	M8X12 BUTTON HEAD SOCKET SCREW	4
6	MAK-UP-516	M8 SPRING WASHER	4
7	MAK-UP-184	M10 CLEVIS PIN	1



Sydney (Head Office) Ph: 1300 795 953
 15 Waltham St Fax: (02) 9439 9815
 Artarmon, 2064 www.makinex.com.au
 NSW, Australia sales@makinex.com.au

COPYRIGHT 2013 MAKINEX.
 WARNING: Copyright in this drawing remains the property of MAKINEX and copying in whole or part is not permitted without the written authority of the copyright owner.

GENERAL TOLERANCES
 (Unless otherwise noted)
 0-100mm: ± 0.25 mm
 100mm - 500mm: ± 0.5 mm
 500mm +: ± 1.0 mm
 Angular: ± 1 deg.

Third Angle Projection
 - AS 1100

DATE: 09/26/19

SCALE: D.N.S A3

All Dimensions are in Millimetres
 Break All Sharp Corners and
 Remove Burrs & Swarf

25
 Denotes Critical Dimension

PROJECT:

DWG NO.

PHT2-08

NOTES: EXPLODED VIEW

TITLE

EXTENDEDABLE NOSE HOOK ASSEMBLY

MATERIAL

MS350

FINISH

PC

DRN: JT

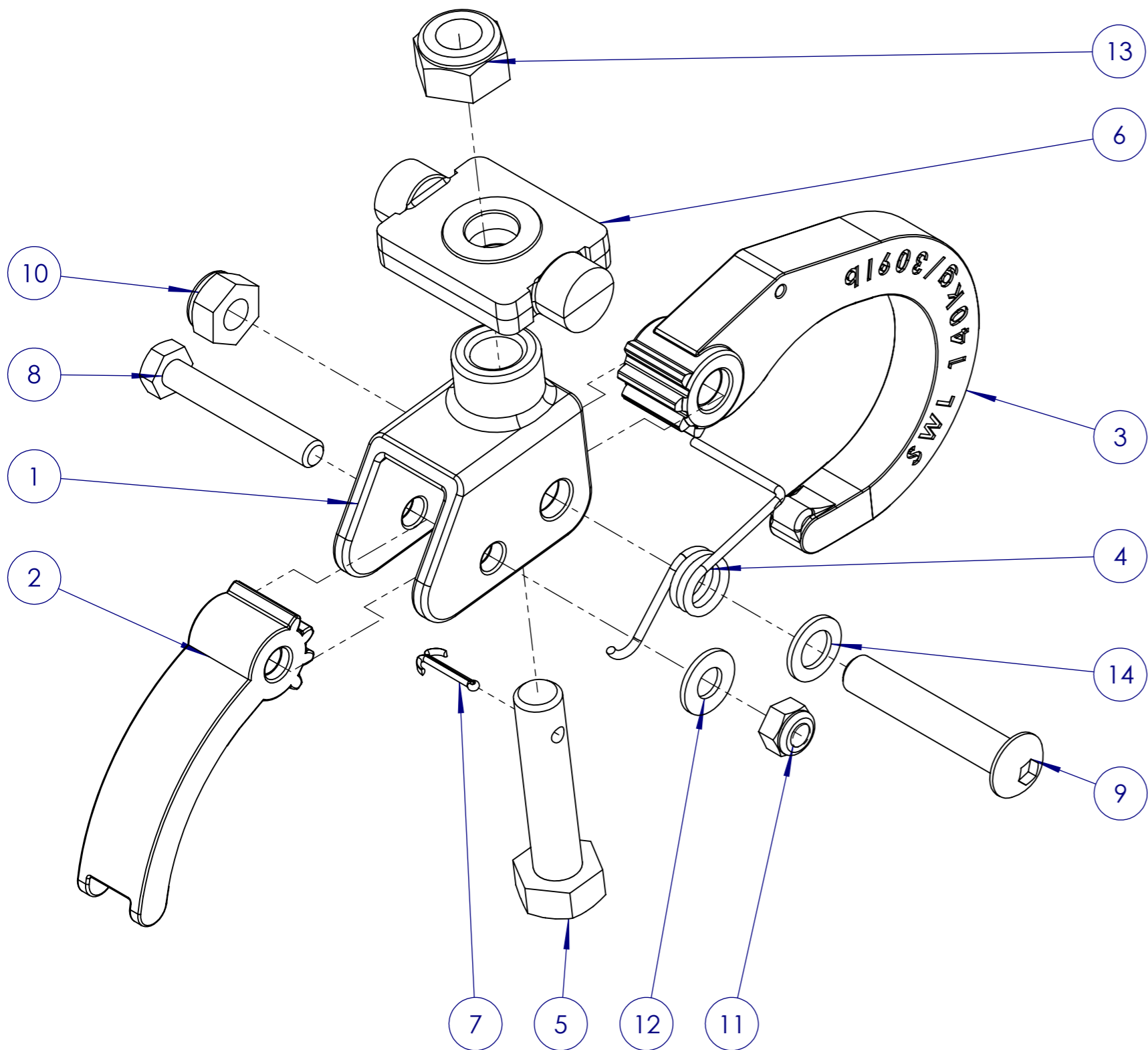
MASS

004

SHEET 14 OF 15

PRINTED: 09/26/19

PRINT MAY BE REDUCED - DO NOT SCALE.



ITEM	PART NO.	PART NAME	QTY
1	PHT2-08-01	HOOK YOKE	1
2	PHT2-08-02	HOOK ROTATOR	1
3	PHT2-08-03	HOOK MAIN	1
4	PHT2-08-04	TORSION SPRING SELF-CLOSING HOOK	1
5	PHT2-08-05	M10X45 CUSTOM HEX BOLT	1
6	PHT2-06-05	SWIVEL PLATE	1
7	MAK-UP-185	1.6MMX10 SPLIT PIN	1
8	MAK-UP-572	M6X40 HEX BOLT Z/P	1
9	MAK-UP-651	M8X45 BUTTON HEAD SOCKET SCREW	1
10	MAK-UP-511	M8 NYLOC NUT	1
11	MAK-UP-503	M6 NYLOC NUT	1
12	MAK-UP-551	M6 FLAT WASHER (SMALL)	1
13	MAK-UP-543	M10 NYLOC NUT	1
14	MAK-UP-621	M8 FLAT WASHER (SMALL)	1

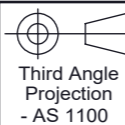


Sydney (Head Office) Ph: 1300 795 953
 15 Waltham St Fax: (02) 9439 9815
 Artarmon, 2064 www.makinex.com.au
 NSW, Australia sales@makinex.com.au

COPYRIGHT 2019 MAKINEX.

WARNING: Copyright in this drawing remains the property of MAKINEX and copying in whole or part is not permitted without the written authority of the copyright owner.

GENERAL TOLERANCES
 (Unless otherwise noted)
 0-100mm: ± 0.25 mm
 100mm - 500mm: ± 0.5 mm
 500mm +: ± 1.0 mm
 Angular: ± 1 deg.



DATE: 09/26/19

SCALE: D.N.S A3

All Dimensions are in Millimetres
 Break All Sharp Corners and
 Remove Burrs & Swarf



PROJECT:

DWG NO.

PHT2-08-A

NOTES: EXPLODED VIEW

TITLE

SELF CLOSING HOOK ASSEMBLY

MATERIAL

CAST CARBON STEEL

FINISH

Z/P

DRN: RK

MASS

001

SHEET 15 OF 15

PRINTED: 09/26/19