

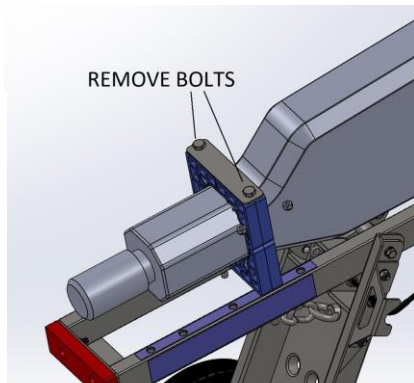
## Vacuum Attachment System JHT-VA-01-00 Install for Jackhammer Trolley

### WHAT YOU'LL NEED



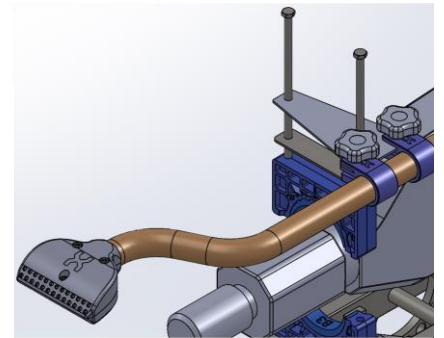
1

For Hilti jackhammer remove 270mm bolts and 10mm nuts holding blockset to JHT frame.



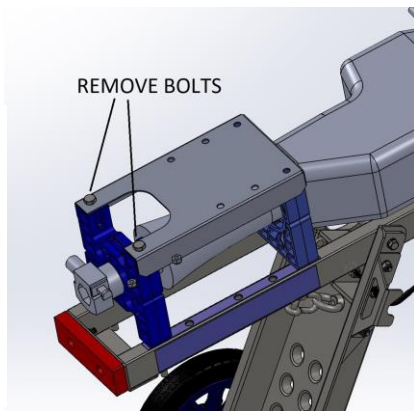
2

Fit vacuum attachment assembly to top of B block and top plate on blockset. Re-install and tighten bolts.



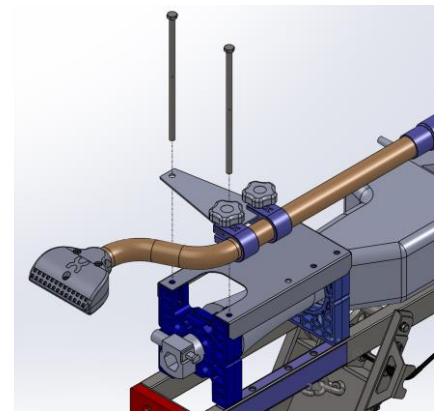
3

For other brand jackhammers remove 250mm bolts and 10mm nuts holding front blockset to JHT frame.



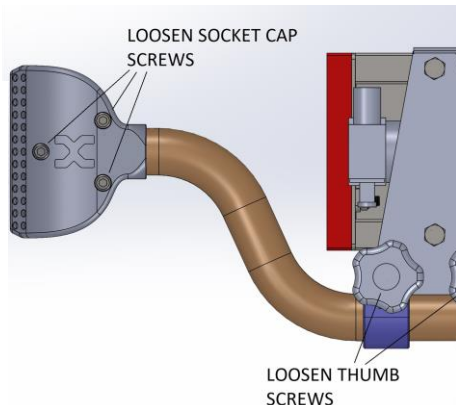
4

Fit vacuum attachment assembly to top of F block and cutout top plate on blockset. Re-install and tighten bolts.



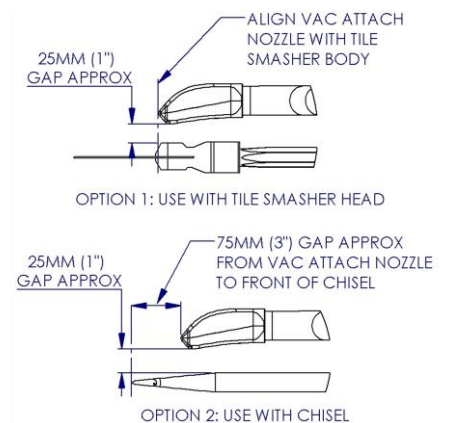
5

Adjust position of nozzle by loosening thumb screws and socket cap screws holding nozzle together.



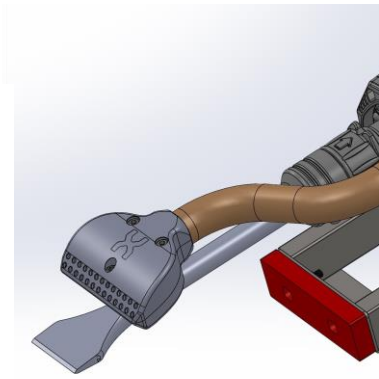
6

Rotate pipe in clamps to adjust nozzle height and slide pipe to adjust fore/aft position.



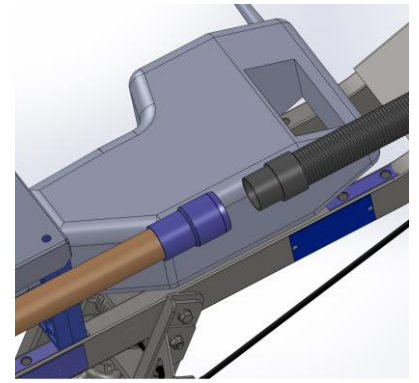
7

Check nozzle is parallel to chisel/tile smasher head and rotate if necessary. Tighten nozzle socket cap screws and thumb screws.



8

Push fit hose adaptor on end of pipe if using 50mm (2") vacuum hose. For 38mm (1.5") hose it is not required. Connect vacuum.



ITEM NO.	PART NAME	PART NUMBER	QTY.
1	VAC NOZZLE UPPER	JHT-VA-01-01	1
2	VAC NOZZLE LOWER	JHT-VA-01-02	1
3	VAC PIPE SIDE MOUNT	JHT-VA-01-03	1
4	VAC PIPE CLAMP	JHT-VA-01-04	2
5	VAC BRACKET SIDE MOUNT	JHT-VA-01-05	1
6	M8X35 MM THUMB SCREW	JHT-VA-01-06	2
7	M8 NYLOC NUT Z/P	MAK-UP-511	5
8	M8X35 SOCKET CAP SCREW	MAK-UP-767	2
9	M8X25 SOCKET CAP SCREW	MAK-UP-772	1
10	VAC HOSE PIPE ADAPTOR	JHT-VA-01-07	1

EXPLODED VIEW AND PARTS LIST

